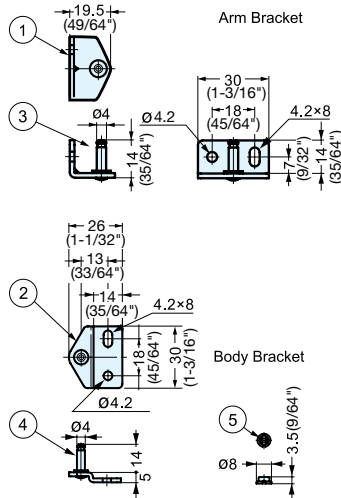


MOUNTING BRACKET



L-SL140-BT



- Optional brackets for L-SL140 stay.
- Insert the retainer and bracket firmly into the stay.
- * Do not re-use the bracket. Retainer may become loose once taken off from stay

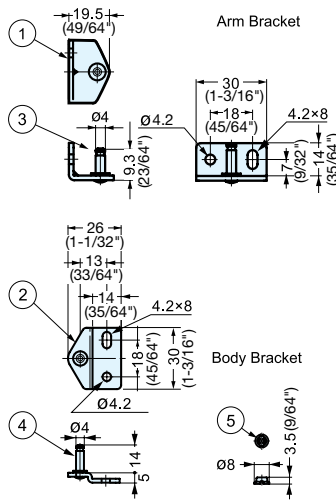
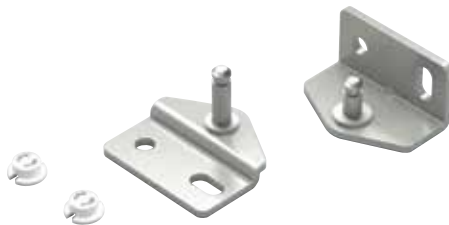
Item No.	Weight (g)	Box (pcs)	Carton (pcs)
L-SL140-BT	28	30	300

No.	Part Name	Material	Finish
①	Arm bracket	304 Stainless Steel	Polished
②	Body bracket		
③	Arm bracket pin	303 Stainless Steel	Plain
④	Body bracket pin		
⑤	Retainer	Polyacetal	Black

MOUNTING BRACKET



L-FS140-BT



- Optional brackets for L-FS140 stay.
- Insert the retainer and bracket firmly into the stay.
- * Do not re-use the bracket. Retainer may become loose once taken off from stay

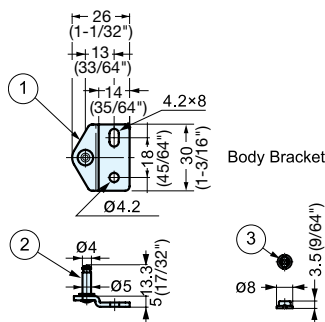
Item No.	Weight (g)	Box (pcs)	Carton (pcs)
L-FS140-BT	27	40	400

No.	Part Name	Material	Finish
①	Arm bracket	304 Stainless Steel	Polished
②	Body bracket		
③	Arm bracket pin	303 Stainless Steel	Plain
④	Body bracket pin		
⑤	Retainer	Polyacetal	Black

MOUNTING BRACKET



L-200P-BT



- Optional brackets for L-200P stay.
- Insert the retainer and bracket firmly into the stay.
- * Do not re-use the bracket. Retainer may become loose once taken off from stay

Item No.	Weight (g)	Box (pcs)	Carton (pcs)
L-200P-BT	14	30	300

No.	Part Name	Material	Finish
①	Arm bracket	304 Stainless Steel	Polished
②	Body bracket		
③	Arm bracket pin	303 Stainless Steel	Plain