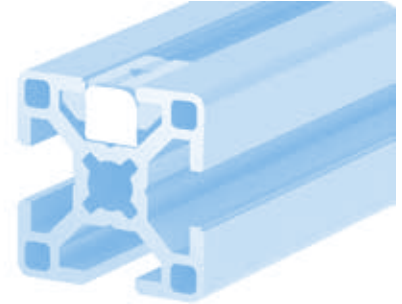
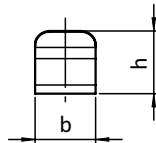
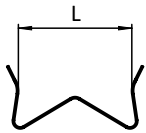


**FEDER FÜR NUTENSTEIN****SPRING FOR T-SLOT NUT****Ausführung** Nut 8 + 10**Model** Slot 8 + 10**Beschreibung** Feder als Montage- und Positionierhilfe, für Nutensteine und einschwenkbare Nutensteine**Description** Spring leaf as mounting and positioning aid, for T-slot nuts and roll-in T-slot nuts**Material** Federstahl 1.4310**Material** Spring steel SS301**Liefereinheit** 100 Stück**Pack Quantity** 100 pieces

Feder für Nutenstein Spring for T-slot Nut	für Nutenstein L [mm] For T-Slot Nut L [mm]	Gewicht [g] Weight [g]	Profil Profile	Teil-Nr. Part #
Nut 8 Slot 8	16.5	0.4	B	096FN08
Nut 10 Slot 10	20	0.5	B	096FN10