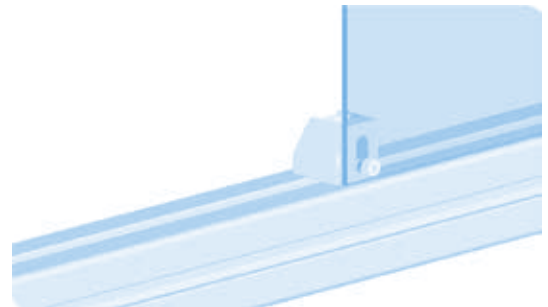
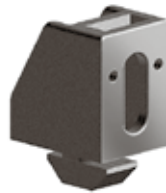
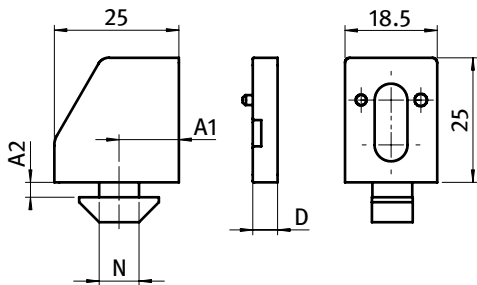




UNIBLOCK 25

UNIBLOCK 25

Ausführung	Kunststoff PA, Nut 8, 10, 12	Model	Plastic PA, slot 8, 10, 12
Beschreibung	zur einfachen Befestigung von Flächenelementen an Aluminiumprofilen	Description	To attach panels easily to aluminum profiles
Material	Block: Kunststoff PA, glasfaserverstärkt Mutter: Stahl, verzinkt	Material	Block: Plastic PA, glass fiber reinforced Nut: Zinc plated steel
Farbe	schwarz	Color	Black
Liefereinheit	100 Stück	Pack Quantity	100 pieces
Extras	individueller Hammer, weitere Farben auf Anfrage	Specials	Customized hammer, other colors on request
Hinweis	* keine weiteren Distanzstücke aufsteckbar!	Tip	* no further spacers can be added!



Uniblock 25	A1 [mm]	A2 (Profil) [mm] A2 (Profile) [mm]	D [mm]	N	Gewinde Thread	Gewicht [g] Weight [g]	Profil Profile	Teil-Nr. Part #
	8.0	4.35 (4.5)		8	M4	9.8	I	094003M4
	8.0	4.35 (4.5)		8	M5	9.7	I	094003M5
	8.0	4.35 (4.5)		8	M6	9.6	I	094003M6
	12.0	4.4 (4.5)		8	M4	9.8	I	094020M4
	12.0	4.4 (4.5)		8	M5	9.7	I	094020M5
	12.0	4.4 (4.5)		8	M6	9.6	I	094020M6
	14.0	4.6 (4.5)		8	M4	10.0	I	094080M4
	14.0	4.6 (4.5)		8	M5	9.9	I	094080M5
	14.0	4.6 (4.5)		8	M6	9.8	I	094080M6
	8.5	5.7 (6.0)		10	M4	10.6	B	094008M4
	8.5	5.7 (6.0)		10	M5	10.5	B	094008M5
	8.5	5.7 (6.0)		10	M6	10.4	B	094008M6
	9.5	5.6 (6.0)		10	M4	10.6	B	094004M4
	9.5	5.6 (6.0)		10	M5	10.5	B	094004M5
	9.5	5.6 (6.0)		10	M6	10.4	B	094004M6
	14.0	6.0 (6.0)		10	M4	10.4	B	094005M4
	14.0	6.0 (6.0)		10	M5	10.3	B	094005M5
	14.0	6.0 (6.0)		10	M6	10.2	B	094005M6
Distanzstück Spacer			*2.0			1.0		094102
			3.0			1.2		094103
			5.0			2.1		094105

