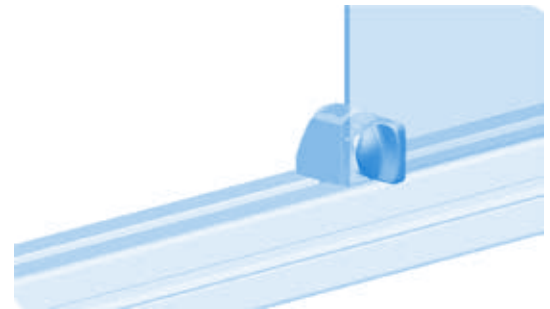
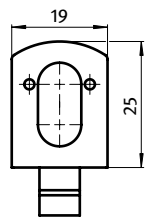
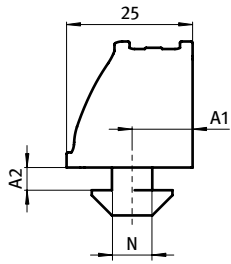




QUICK-BLOCK 25

QUICK-BLOCK 25

Ausführung	Kunststoff PA, Nut 8, 10	Model	Plastic PA, slot 8, 10
Beschreibung	zur schnellen Befestigung von Flächenelementen an Aluminiumprofilen	Description	To attach panels quickly to aluminum profiles
Material	Kunststoff PA, glasfaserverstärkt	Material	Plastic PA, glass fiber reinforced
Farbe	schwarz	Color	Black
Liefereinheit	100 Stück	Pack Quantity	100 pieces
Extras	individueller Hammer, weitere Farben auf Anfrage	Specials	Customized hammer, other colors on request



Quick-Block 25	A1 [mm]	A2 (Profil) [mm] A2 (Profile) [mm]	N	Gewicht [g] Weight [g]	Profil Profile	Teil-Nr. Part #
Lockpin M	12.0	4.4 (4.5)	8	11.0	I	094700
	8.5	5.7 (6.0)	10	12.0	B	094701
	7.0	1.9 (2.2)	8	11.0	B	094707

