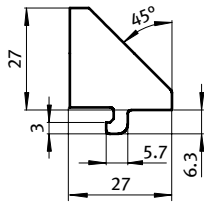
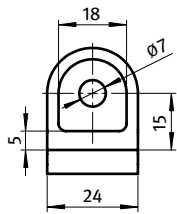




KLEMMWINKEL 30

ADJUSTABLE ANGLE CLAMP 30

| | | | |
|----------------------|--|----------------------|--|
| Ausführung | Zinkdruckguss | Model | Zinc die-cast |
| Beschreibung | zur schnellen und flexiblen Verbindung von zwei Aluminium-Profilen | Description | To connect aluminum profiles easily and with flexibility |
| Material | Zinkdruckguss | Material | Zinc die-cast |
| Befestigung | mit Schraube M6 | Fastening | Using M6 screw |
| Liefereinheit | 10 Stück | Pack Quantity | 10 pieces |
| Extras | weitere Oberflächen, weitere Farben auf Anfrage | Specials | Other surfaces, other colors on request |
| Hinweis | Weitere Nuten auf Anfrage | Tip | Other slots on request |



| Klemmwinkel <i>Adjustable Angles</i> | Nut <i>Slot</i> | Gewicht [g] <i>Weight [g]</i> | Profil <i>Profile</i> | Teil-Nr. <i>Part #</i> |
|---|--------------------|----------------------------------|--------------------------|---------------------------|
| blank <i>Plain</i> | 6 | 44.0 | I | 093WK301N06R |
| alufarbig <i>Alu color</i> | 6 | 44.0 | I | 093WK301N06A |

