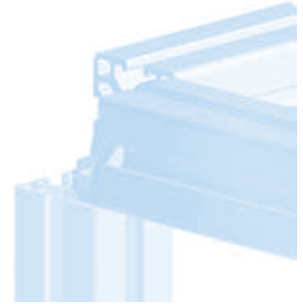
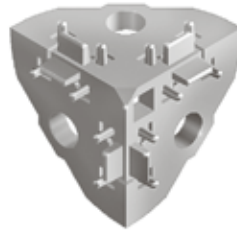
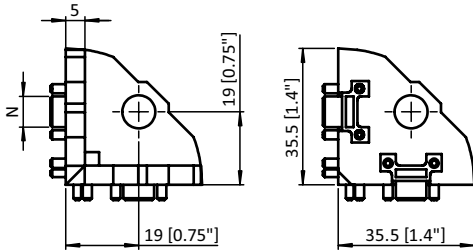




ECKWINKEL 38 - 1,5"

3-WAY CONNECTION ANGLE 38 - 1.5"

Ausführung	Zinkdruckguss, für Profil 1,5 Zoll	Model	Zinc die-cast, for profile 1.5 inch
Beschreibung	zur rechtwinkligen Verbindung von bis zu drei Aluminiumprofilen	Description	To connect up to three aluminum profiles at right angles
Material	Zinkdruckguss	Material	Zinc die-cast
Liefereinheit	50 Stück	Pack Quantity	50 pieces



Eckwinkel 38 - 1,5" 3-way Connection Angle 38 - 1,5"	N	für Schraube for Screw	Gewicht [g] Weight [g]	Teil-Nr. Part #
	8	M8	67.0	093WE381N08

