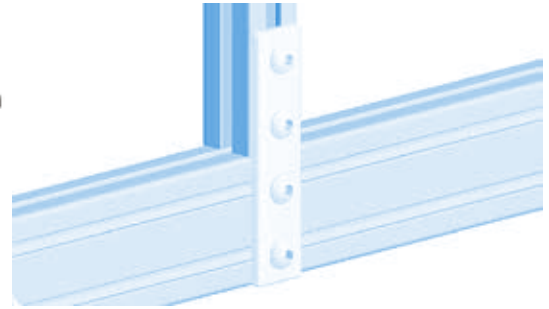
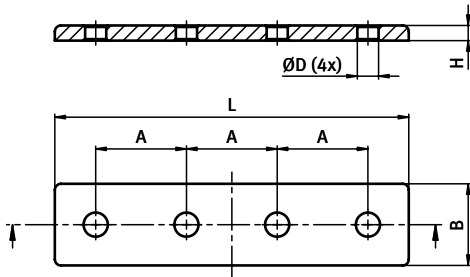


VERBINDERPLATTE

CONNECTION PLATE

Ausführung Aluminium**Model** *Aluminum***Beschreibung** zur Verbindung von zwei Aluminiumprofilen**Description** *To connect two aluminum profiles***Material** Aluminium**Material** *Aluminum***Oberfläche** eloxiert**Surface** *Anodized***Liefereinheit** 10 Stück**Pack Quantity** *10 pieces***Extras** weitere Oberflächen, weitere Farben auf Anfrage**Specials** *Other surfaces, other colors on request*

Verbinderplatte Connection Plate	A [mm]	B [mm]	H [mm]	L [mm]	ØD [mm]	Gewicht [g] Weight [g]	Teil-Nr. Part #
20/80	20.0	18.0	4.0	78.0	5.5	15.0	093VA2080
30/120	30.0	27.0	5.0	117.0	7.0	40.0	093VA30120
38/152 - 1.5"/5.98"	38.1 (1.5")	34.0 (1.34")	6.0	148.0 (5.8")	9.0	77.0	093VA38152
40/160	40.0	36.0	6.0	156.0	9.0	86.0	093VA40160
45/180	45.0	41.0	6.0	176.0	9.0	112.0	093VA45180