

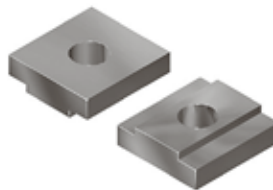
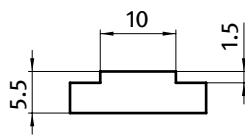
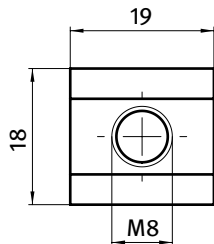


Nutmutter und -schrauben *T-Nuts and T-Bolts*Nutensteine *T-slot Nuts*

Nut 10 Slot 10


FATH
Components
**NUTENSTEIN 18,0 × 5,5 MM****T-SLOT NUT 18.0 × 5.5 MM****Ausführung** Nut 10, mit Führungssteg, Stahl**Beschreibung** Nutenstein mit Führungssteg**Material** Stahl, verzinkt**Liefereinheit** 100 Stück**Extras**  elektrostatisch entladend, verschiedene Längen mit mehreren Gewinden in unterschiedlichen Größen auf Anfrage**Model** Slot 10, self-aligning, steel**Description** Self-aligning T-slot nut**Material** Zinc plated steel**Pack Quantity** 100 pieces**Specials**  electrostatically discharging, different lengths with multiple threads in different sizes available on requestNutenstein
*T-slot Nut*Größe
*Size*Gewicht [g]
*Weight [g]*Teil-Nr.
Part #

M8

11.5

096928