

Series 2 manually operated console minivalves

3/2 and 5/3-way CC, CO, CP
Ports M5, Cartridge Ø 4

2

CONTROL



This series of miniature valves has been especially designed to satisfy all the application requirements of the controls industry with particular attention paid to the operating characteristics required from these components:

- short operational stroke
- small dimensions

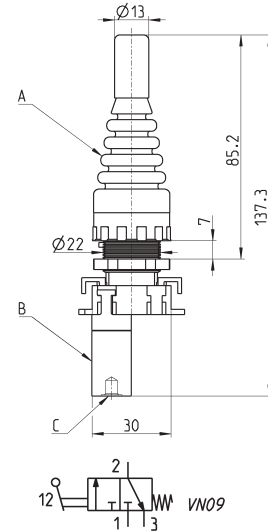
GENERAL DATA

Valve group	3/2-way
Construction	poppet-type (closed centres)
Materials	aluminium body, brass plunger, NBR seals
Mounting	panel
Ports	M5 or cartridge dia. 4
Ambient temperature	0°C + 60°C
Medium temperature	0°C + 50°C
Operating pressure	see models

CODING EXAMPLE					
2	3	4	-	97	5
2	SERIES				
3	FUNCTION: 3 = 3/2-way NC 4 = 3/2-way NO 8 = 5/3-way CO (function realized with 2x 3/2-way NC valves)				
4	PORTS: 4 = cartridge \varnothing 4 5 = M5				
97	MODE OF OPERATION: 87 = 3 position selector 89 = push button 97 = palm switch 90 = joystick 99 = 2 position selector 92 = pedal 904 = key				
5	RESETTING: 5 = spring return 0 = stable 2 = latching-twist to release 54= joystick				

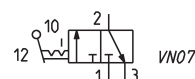
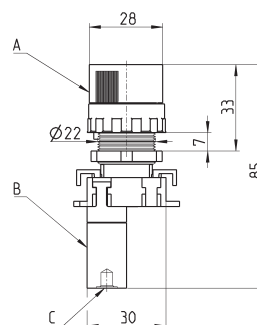


Minivalves Mod. 234-905, 235-905



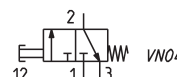
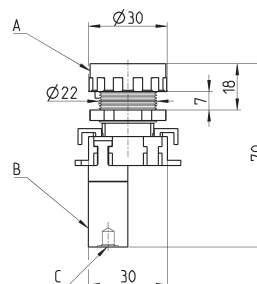
Mod.	Operating pressure (bar)	Flow (NI/min)	A	B	C (Supply/port)
234-905	2 ÷ 8	60	200-905	234-000	$\varnothing 4/2$
235-905	2 ÷ 8	60	200-905	235-000	M5

Minivalves Mod. 234-990, 235-990



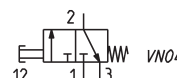
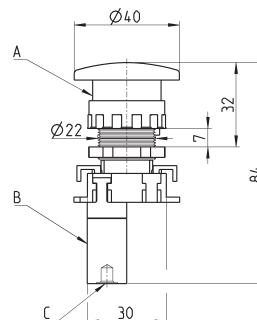
Mod.	Operating pressure (bar)	Flow (NI/min)	A	B	C (Supply/port)
234-990	2 ÷ 8	60	200-990	234-000	Ø4/2
235-990	2 ÷ 8	60	200-990	235-000	M5

Minivalves Mod. 234-895, 235-895



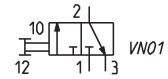
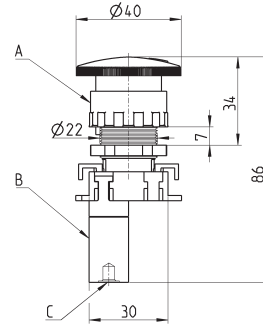
Mod.	Operating pressure (bar)	Flow (NI/min)	Actuating force at 6 bar (N)	A	B	C (Supply/port)
234-895	2 ÷ 8	60	7	200-895	234-000	Ø4/2
235-895	2 ÷ 8	60	7	200-895	235-000	M5

Minivalves Mod. 234-975, 235-975



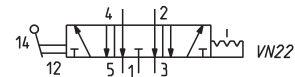
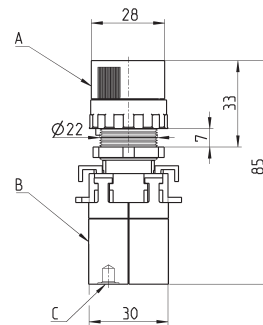
Mod.	Operating pressure (bar)	Flow (NI/min)	Actuating force at 6 bar (N)	A	B	C (Supply/port)
234-975	2 ÷ 8	60	7	200-975	234-000	Ø4/2
235-975	2 ÷ 8	60	7	200-975	235-000	M5

Minivalves Mod. 234-972, 235-972



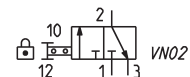
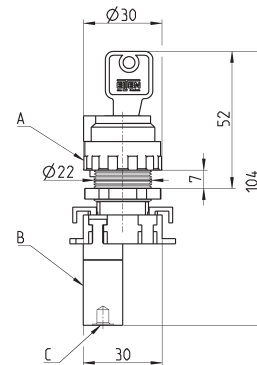
Mod.	Operating pressure (bar)	Flow (NI/min)	Actuating force at 6 bar (N)	A	B	C (Supply/port)
234-972	2 ÷ 8	60	7	200-972	234-000	Ø4/2
235-972	2 ÷ 8	60	7	200-972	235-000	M5

Minivalves Mod. 284-870, 285-870



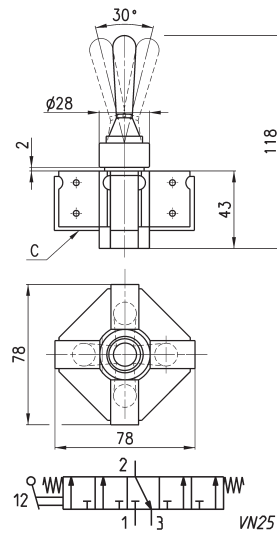
Mod.	Operating pressure (bar)	Flow (NI/min)	A	B	C (Supply/port)
284-870	2 ÷ 8	60	200-870	234-000	Ø4/2
285-870	2 ÷ 8	60	200-870	235-000	M5

Minivalves Mod. 234-904, 235-904



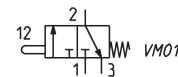
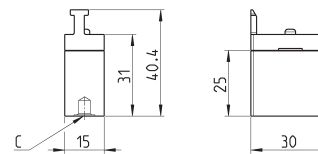
Mod.	Operating pressure (bar)	Flow (NI/min)	A	B	C (Supply/port)
234-904	2 ÷ 8	60	200-904	234-000	Ø4/2
235-904	2 ÷ 8	60	200-904	235-000	M5

Joystick valves Mod. 234-9054, 235-9054



Mod.	Minimum pressure (bar)
234-9054	2
235-9054	2

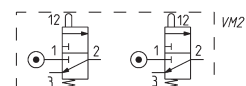
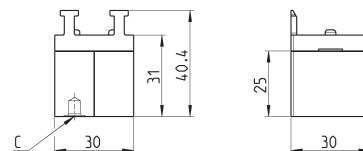
Minivalves Mod. 234-000, 235-000



Mod.	Operating pressure (bar)	Flow (NI/min)
234-000	2 + 8	60
235-000	2 + 8	60

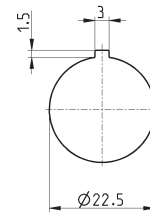
Minivalves Mod. 284-000, 285-000

The codes shown in the table are composed by two 3/2-way valves NC which can be operated with the control device Mod. 200-870 only.



Mod.	Operating pressure (bar)	Flow (NI/min)
284-000	2 + 8	60
285-000	2 + 8	60

Drilling for mounting

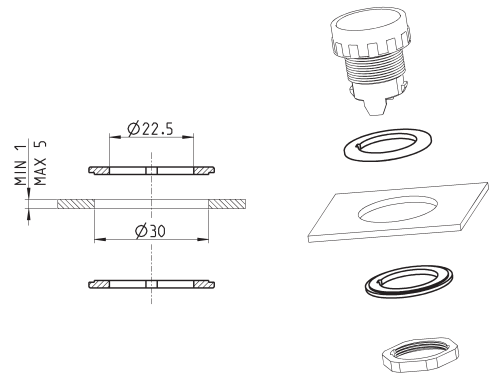


2

CONTROL

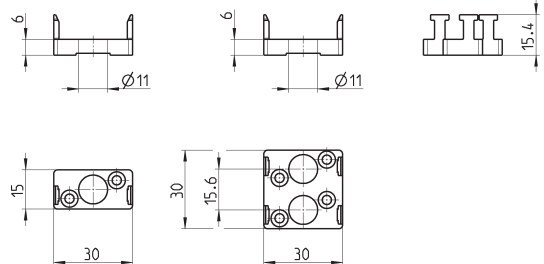
Adaptor

Panel hole adaptor Ø30
Supplied with:
2x reduction rings



Mod.
200-2230

End cover



Mod.
210-000
220-000