

# vacuum area gripper

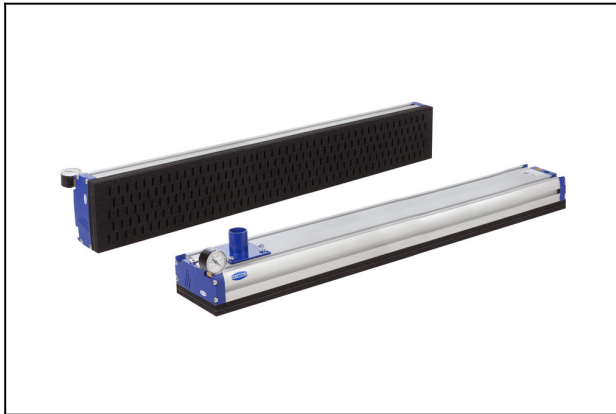
## FMP-SW60 640 5R18 O10O10 G32

Part no.:10.01.38.00647

<https://www.schmalz.com/10.01.38.00647>

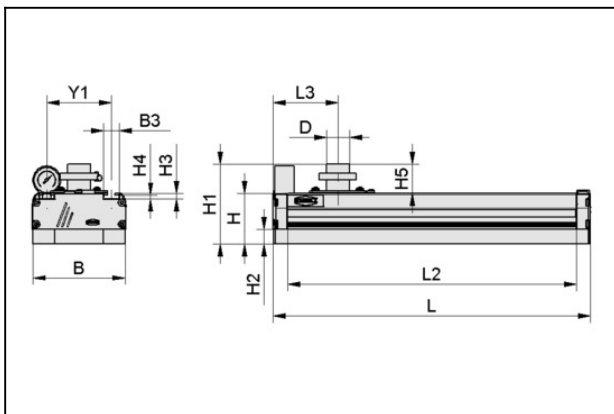
Homepage > Vacuum Technology for Automation > Vacuum Components > Area Gripping Systems and End Effectors > Vacuum Area Gripping System FXP/FMP > Area Gripping Systems FMP > FMP-SW60 640 5R18 O10O10 G32

### Vacuum area gripping system for external vacuum generator, with flow resistors



Length L: 640 mm  
 Width B: 130 mm  
 Arrangement: 5 rows, 18mm  
 Material-Type: Foam O, Height 2x10 mm  
 Flat recess: slot  
 Nozzle diameter: 0.6 mm  
 Fitting version: Straight  
 External diameter D: 32 mm  
 Weight: 2.8 kg

### Design Data



| Attribute  | Value  |
|------------|--------|
| B          | 130 mm |
| H          | 65 mm  |
| H1         | 111 mm |
| L          | 640 mm |
| L2         | 600 mm |
| Valve type | SW     |

### Technical Data

| Attribute     | Value                  |
|---------------|------------------------|
| Arrangement   | 5R18                   |
| Material type | Foam O, Height 2x10 mm |

### Contact to Schmalz

J. Schmalz GmbH | Johannes-Schmalz-Straße, 72293 Glatten, Deutschland | +49 7443 2403-102 | [customercenter@schmalz.de](mailto:customercenter@schmalz.de)

## vacuum area gripper

FMP-SW60 640 5R18 O10O10 G32

Part no.:10.01.38.00647

<https://www.schmalz.com/10.01.38.00647>

| Attribute                                     | Value        |
|---|--------------|
| Number of suction cells                       | 165          |
| Suction force                                 | 510 N        |
| Weight  | 2.8 kg       |
| Sealing element                               | Sealing Foam |
| Erforderl. Saugleistung für $p_u = -0,25$ bar | 450 l/min    |

For compressed air with 5.5 bar input pressure At -0.25 bar and with the gripper fully covered by a workpiece typical for the application (wooden board with structured surface) The external vacuum generator used must supply at least the specified suction flow (at the vacuum connection piece of the FMP) at -0.25 bar but max. 135 % of the specified suction flow

---

---