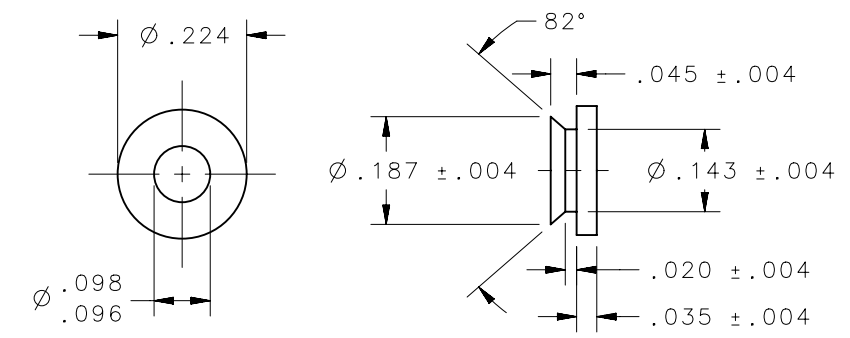
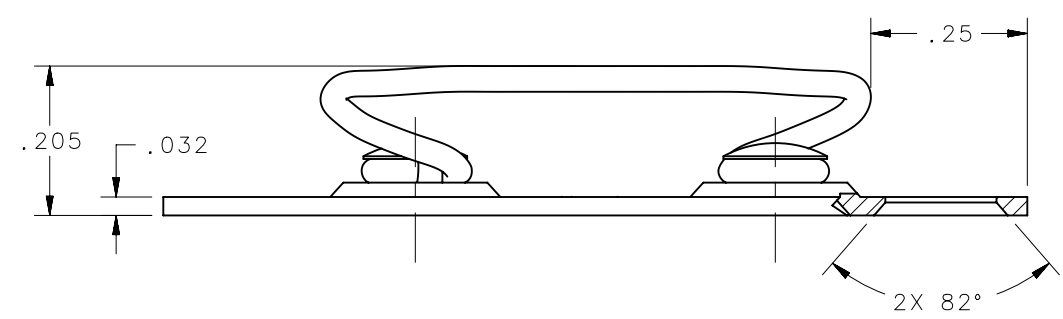
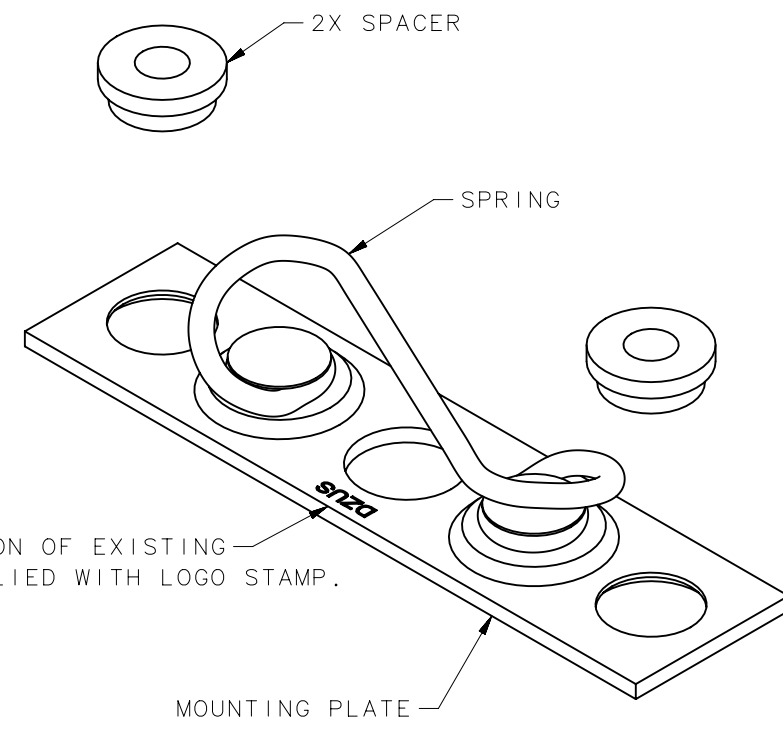
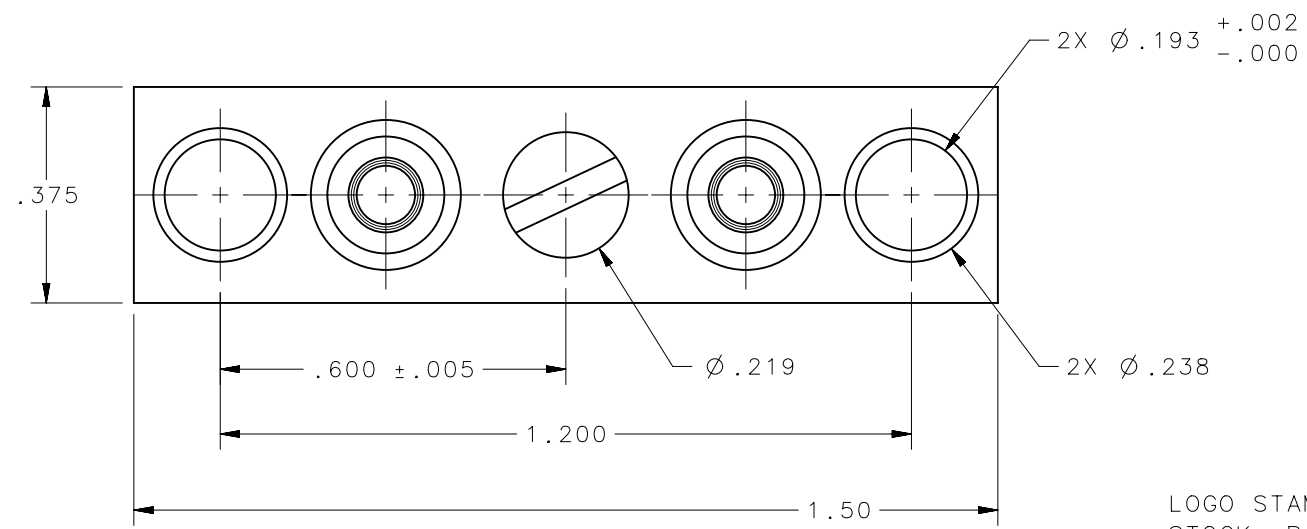


REVISION HISTORY			
REV	DATE	BY	DESCRIPTION
C	23FEB2016	CMS/JW	PRN: P2016-0392



2 SPACERS ARE INCLUDED WITH EACH ASSEMBLY



LOGO STAMPED UPON DEPLETION OF EXISTING STOCK. PARTS WILL BE SUPPLIED WITH LOGO STAMP.

NOTES:

MATERIALS:  
 SPRING: MUSIC WIRE PER ASTM-A228  
 RIVETS: STAINLESS STEEL  
 SPACERS: AISI 1018, 1117, 1215 OR 8620 STEEL  
 MOUNTING PLATE: COLD ROLLED CARBON STEEL

FINISH:  
 SEE J-D5-0-3 FOR FINISH INFORMATION AND SPECIFICATIONS.

1224-1153-205-C3Y		D4-X1153-205CBYNA	
1224-1153-205-Z3CT		D4-X1153-205ZCTNA	
DFCI PART NUMBER		SOUTHCO PART NUMBER	
CAGE CODE	72794		
INCHES [MM]			
TOLERANCES UNLESS OTHERWISE NOTED		 CONNECT • CREATE • INNOVATE <b>RECEPTACLE ASSEMBLY</b>	
X° ..... ±2°			
X/X ..... ±1/32			
.XX ..... ±.015			
.XXX ..... ±.010		DESCRIPTION	
MACHINE FINISH: .125		SIZE	SYSTEM
PER ASME Y14.5M-1994		B	NX
PROPRIETARY ITEM EXCEPT FOR USES EXPRESSLY GRANTED IN WRITING, INFORMATION DISCLOSED HEREON IS CONFIDENTIAL AND ALL RIGHTS, PATENT AND OTHERWISE, ARE RESERVED BY SOUTHCO, INC.		DWG NO.	J-D4-X1153NA
		DRAWN BY	CMS/NJF
		DATE	14JUL2015
		SCALE	3:1
		SHEET	1 OF 1