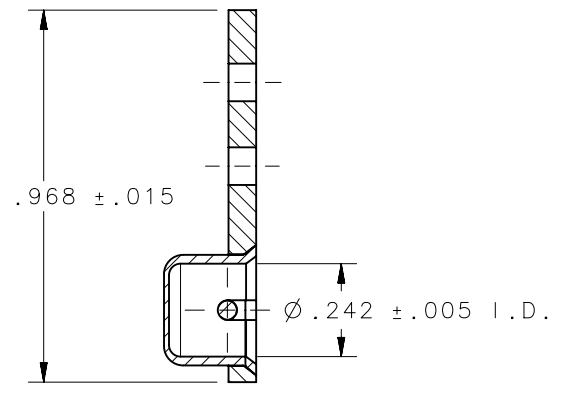
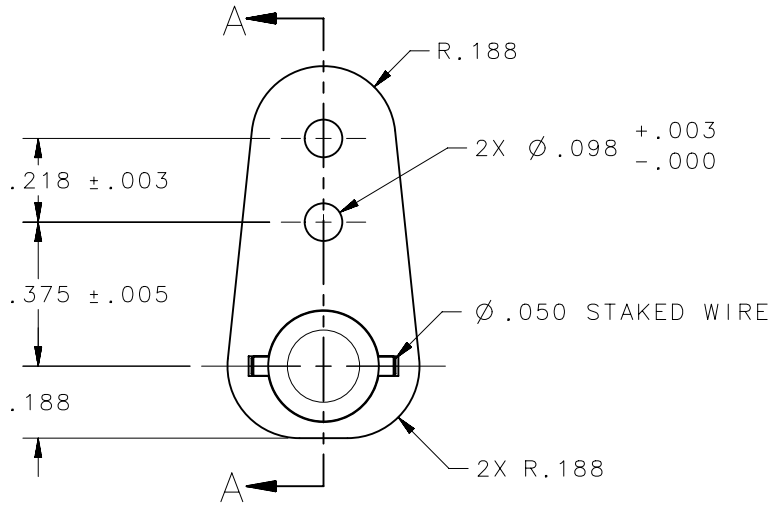
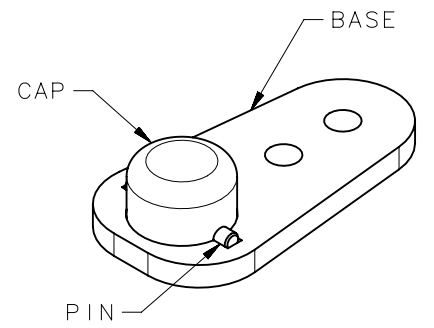
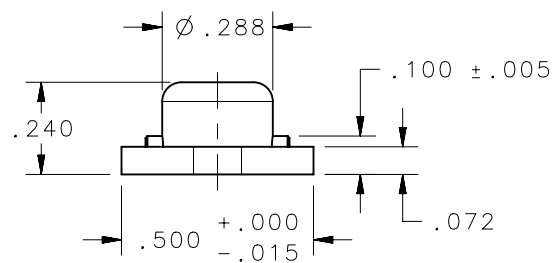


REVISION HISTORY			
REV	DATE	BY	DESCRIPTION
E	15MAY2017	CMS/JCG	PRN: P2017-1167



SECTION A-A



NOTES:

- A. ANODIZING, SULFURIC ACID BATH PER MIL-A-8625, TYPE II, CLASS 1.
- B. MATERIALS:
CAP & BASE: 6061-T6 ALUMINUM.
PIN: 316 STAINLESS STEEL,
COND. B, SPRING TEMPER.
- C. REMOVE ALL BURRS AND BREAK SHARP CORNERS.
- D. ALL CORNERS AND FILLETS R.005 MAX.

DFCI PART NUMBER	DZUS PART NUMBER	SOUTHCO PART NUMBER	FINISH		
			CAP & BASE	PIN	
3518-F-AS1C	PRF35ASC	D5-PRF35ASCNA	SEE NOTE A	NATURAL	
3518-F	PRF35	D5-PRF35NA	NATURAL	NATURAL	
CAGE CODE 72794	THIRD ANGLE PROJECTION	 CONNECT • CREATE • INNOVATE RECEPTACLE ASSEMBLY			
	INCHES [MM]				
	TOLERANCES UNLESS OTHERWISE NOTED	DESCRIPTION	SIZE	SYSTEM	DWG NO.
	X° ±2°		A	NX	J-D5-PRF35NA
	X/X ±1/32				
	.XX ±.015				
	.XXX ±.010				
PROPRIETARY ITEM EXCEPT FOR USES EXPRESSLY GRANTED IN WRITING, INFORMATION DISCLOSED HEREON IS CONFIDENTIAL AND ALL RIGHTS, PATENT AND OTHERWISE, ARE RESERVED BY SOUTHCO, INC.	PER ASME Y14.5M-1994	DRAWN BY CMS/NJF	DATE 14MAY2015	SCALE 2:1	SHEET 1 OF 1