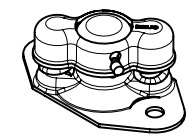
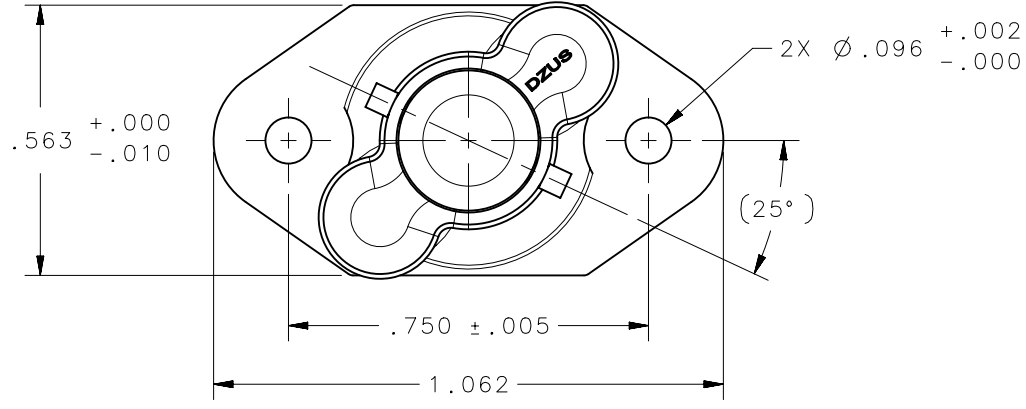
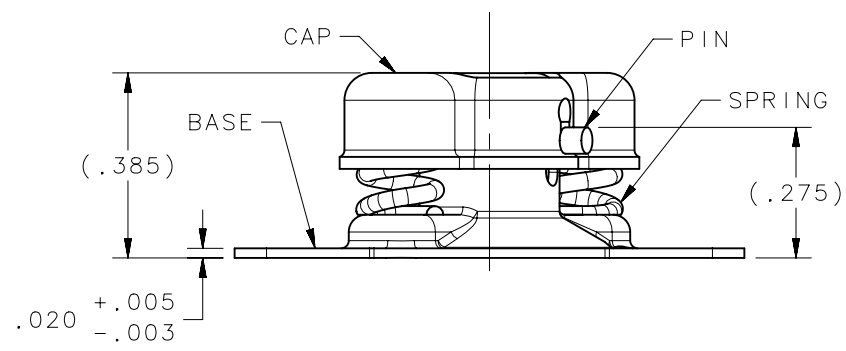


REVISION HISTORY			
REV	DATE	BY	DESCRIPTION
C	03AUG2015.	CMS/NJF	PRN: P2015-1571



SCALE 1:1



- NOTES:
- REMOVE ALL BURRS AND BREAK SHARP EDGES.
  - ALL CORNERS AND FILLETS .005 MAX.
  - MATERIAL:  
 CAP: 1008/1010 STEEL PER ASTM A109/A109M.  
 SPRING: MUSIC WIRE PER ASTM A228  
 PIN: MUSIC WIRE PER ASTM A228  
 BASE: 4130 STEEL, HEAT TREAT TO ROCKWELL C37-40.
  - SEE J-D5-0-3 FOR FINISH INFORMATION AND SPECIFICATIONS.

2350-18-Z3CT	D4-R35ZCTNA
2350-18-C3Y	D4-R35CBYNA
2350-18-C3C	D4-R35CBCNA
DFCI PART NUMBER	SOUTHCO PART NUMBER

CAGE CODE	72794
THIRD ANGLE PROJECTION	
INCHES [MM]	
TOLERANCES UNLESS OTHERWISE NOTED	
X°	±2°
X/X	±1/32
.XX	±.015
.XXX	±.010
PER ASME Y14.5M-1994	

<b>southco</b> <sup>®</sup>			
CONNECT • CREATE • INNOVATE			
RECEPTACLE ASSEMBLY			
SIZE	SYSTEM	DWG NO.	
A	NX	J-D4-R35NA	
DRAWN BY	DATE	SCALE	SHEET
CMS/NJF	10JUL2015	2.5:1	1 OF 1

PROPRIETARY ITEM  
 EXCEPT FOR USES EXPRESSLY GRANTED IN WRITING, INFORMATION DISCLOSED HEREON IS CONFIDENTIAL AND ALL RIGHTS, PATENT AND OTHERWISE, ARE RESERVED BY SOUTHCO, INC.