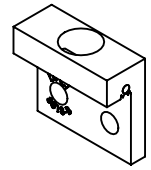
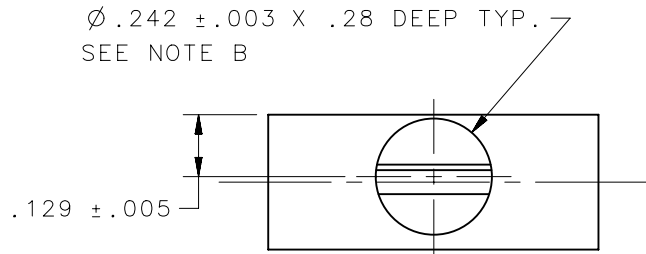
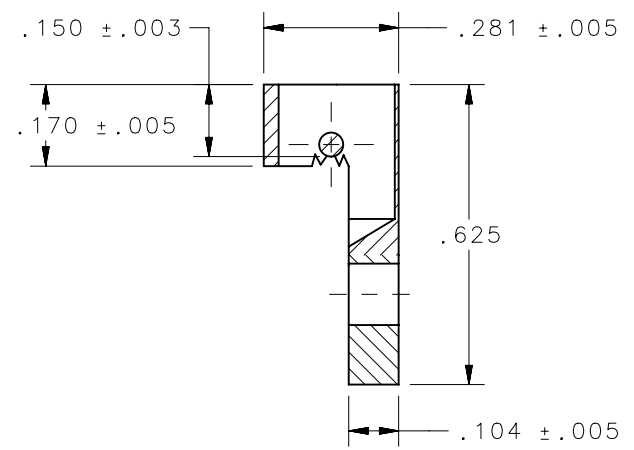
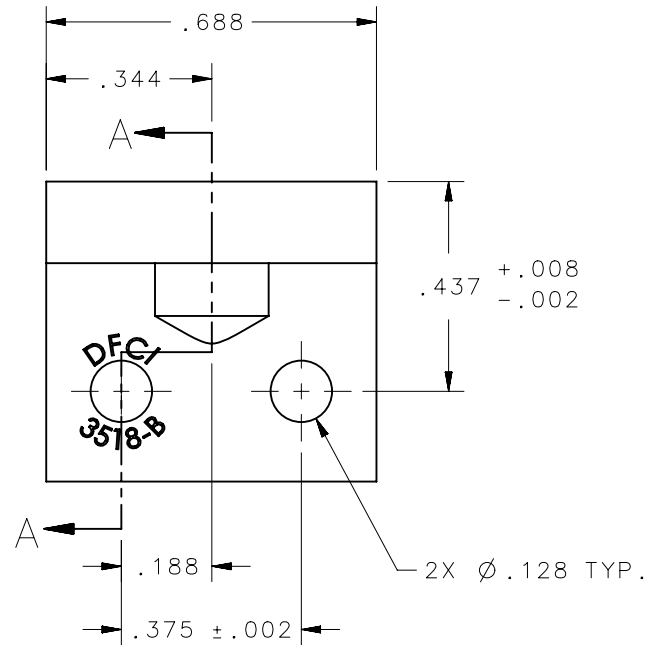


REVISION HISTORY			
REV	DATE	BY	DESCRIPTION
A	16SEP2015	CMS/NJF	INITIAL RELEASE



SCALE 1:1



SECTION A-A

NOTES:

A. MATERIAL:  
 STRIP: ALUMINUM ALLOY 6061-T6  
 PER AMS QQ-A-200A.  
 WIRE:  $\varnothing .050$ " 316 STAINLESS STEEL  
 WIRE, CONDITION B PER  
 ASTM A313/A313M.

B. SEE J-D5-0-3 FOR FINISH  
 SPECIFICATIONS AND INFORMATION

3518-B-IVD	D5-PRB35IVDNA
3518-B-ACNC	D5-PRB35ACNNA
3518-B-AC1Y	D5-PRB35MCYNA
3518-B	D5-PRB35NA
DFCI PART NUMBER	SOUTHCO PART NUMBER
THIRD ANGLE PROJECTION	 CONNECT • CREATE • INNOVATE
INCHES [MM]	
TOLERANCES UNLESS OTHERWISE NOTED	DESCRIPTION
X° ..... ±2°	SINGLE HOLE RECEPTACLE
X/X ..... ±1/32	SIZE
.XX ..... ±.015	A
.XXX ..... ±.010	SYSTEM
PER ASME Y14.5M-1994	NX
PROPRIETARY ITEM	DWG NO.
EXCEPT FOR USES EXPRESSLY GRANTED IN WRITING, INFORMATION DISCLOSED HEREON IS CONFIDENTIAL AND ALL RIGHTS, PATENT AND OTHERWISE, ARE RESERVED BY SOUTHCO, INC.	J-D5-PRB35NA
	DRAWN BY
	CMS/NJF
	DATE
	10SEP2015
	SCALE
	2.5:1
	SHEET
	1 OF 1