

6

5

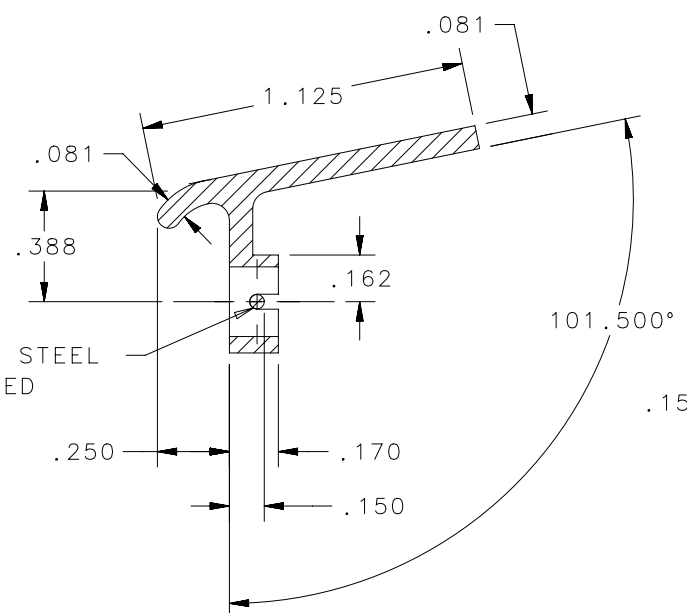
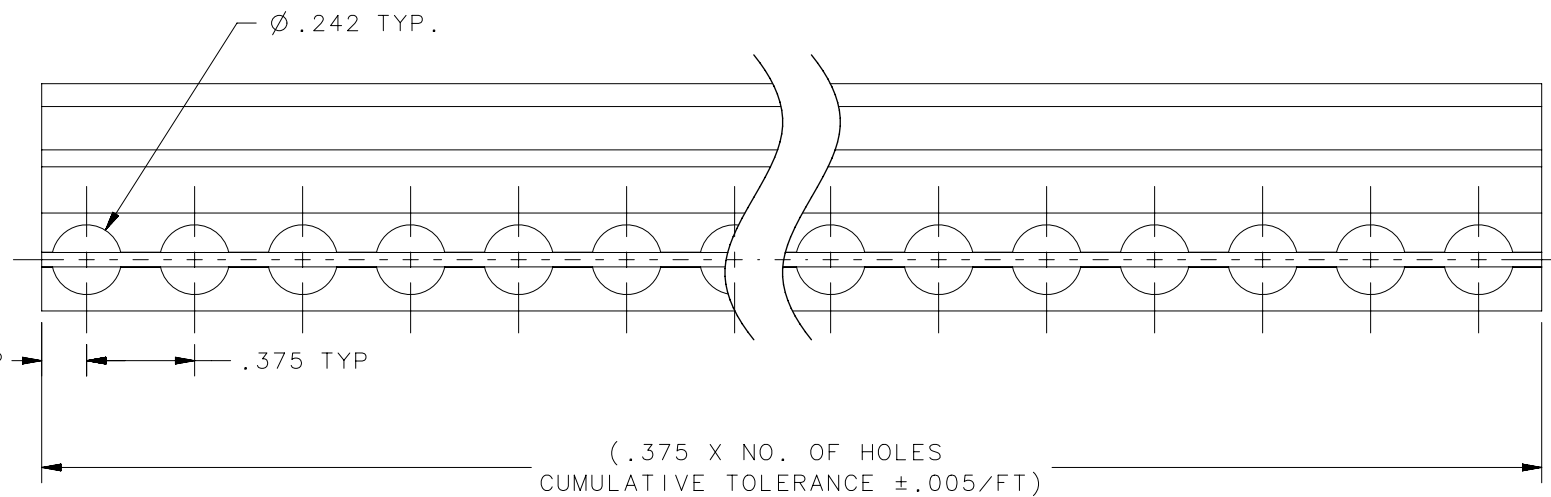
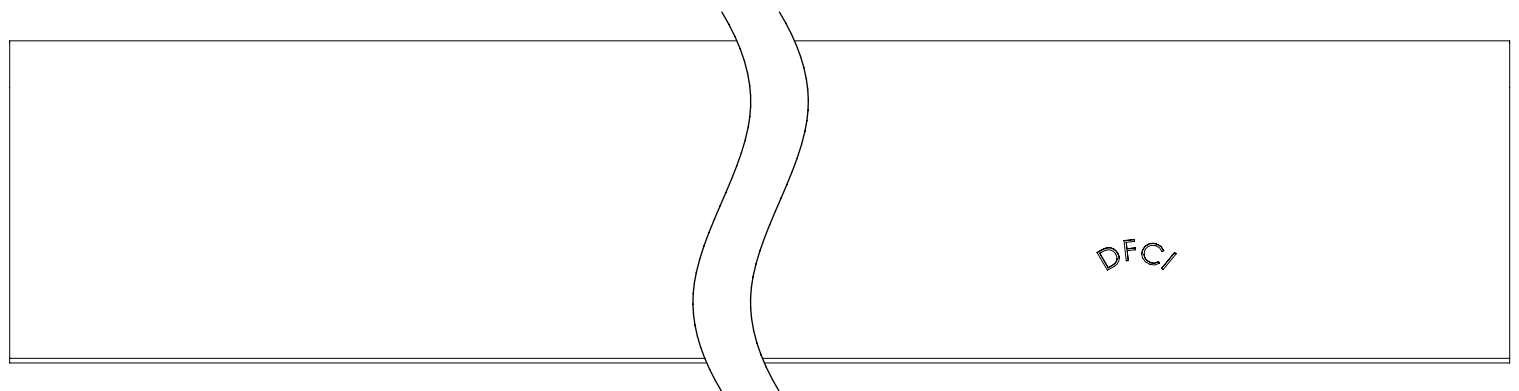
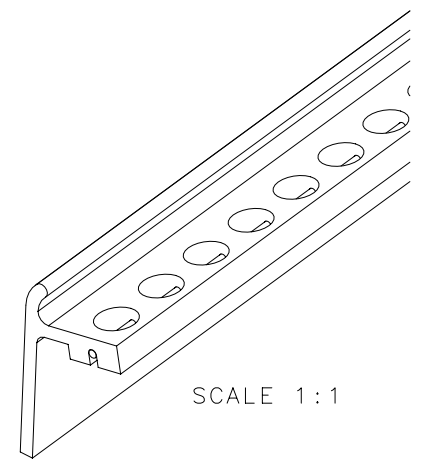
4

3

2

1

REVISION HISTORY			
REV	DATE	BY	DESCRIPTION
C	12JUN2018	NBK/VK	PRN: P2018-1429



Ø .050 ST. STEEL  
WIRED STAKED  
IN PLACE

- NOTES:
- MATERIAL: 6061-T6 ALUMINUM ALLOY PER QQ-A-200/8B CONDITION T6 ROCKWELL E 90 MIN. STAINLESS STEEL WIRE PER QQ-W-423, TYPE FS316, CONDITION B (SPRING TEMPER)
  - FINISH: EXTRUSION: MIL-C-5541 CHEMICAL FILM FOR ALUMINUM ALLOYS WIRE: NONE

3590-24858-H288-AC1	D5-PR35X858H288MCN	SEE NOTE 1	SEE NOTE 2	288
3590-24858-AC1	D5-PR35X858MCNNA	SEE NOTE 1	SEE NOTE 2	320
3590-24858-H288	D5-PR35X858H288NA	SEE NOTE 1	NATURAL	288
DFCI PART NUMBER	SOUTHCO PART NUMBER	MATERIAL	FINISH	NO. OF HOLES

THIRD ANGLE PROJECTION 	<b>southco</b> <sup>®</sup> CONNECT • CREATE • INNOVATE			
	INCHES [MM]			
	TOLERANCES UNLESS OTHERWISE NOTED 2 PLACE DECIMALS ±.02 3 PLACE DECIMALS ±.010 4 PLACE DECIMALS ±.0010			
	ANGLES ±5° <small>PROPRIETARY ITEM EXCEPT FOR USES EXPRESSLY GRANTED IN WRITING. INFORMATION DISCLOSED HEREON IS CONFIDENTIAL AND ALL RIGHTS, PATENT AND OTHERWISE, ARE RESERVED BY SOUTHCO, INC.</small>			
DESCRIPTION <b>LINE RECEPTACLE</b>		SIZE <b>B</b>	SYSTEM <b>NX</b>	DWG NO. <b>J-D5-PR35X858NA</b>
PER ASME Y14.5M-1994		DRAWN BY <b>CMS/JW</b>	DATE <b>25SEP2017</b>	SCALE <b>1.5:1</b>
				SHEET <b>1 OF 1</b>

6

5

4

3

2

1