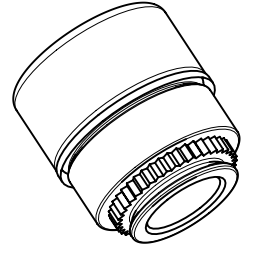
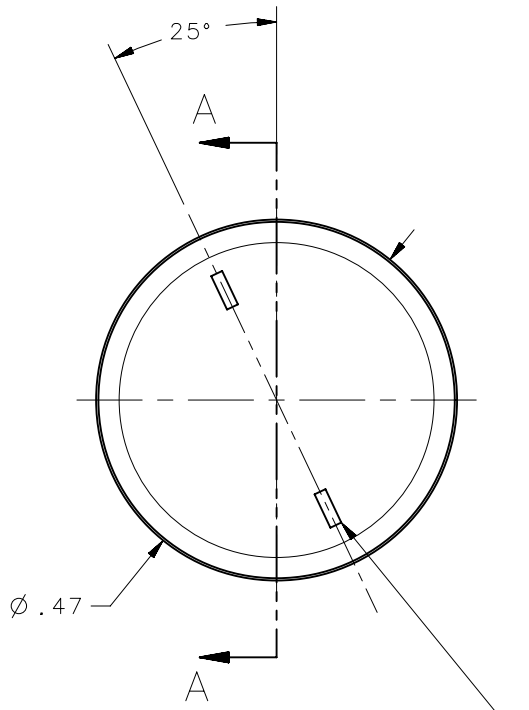


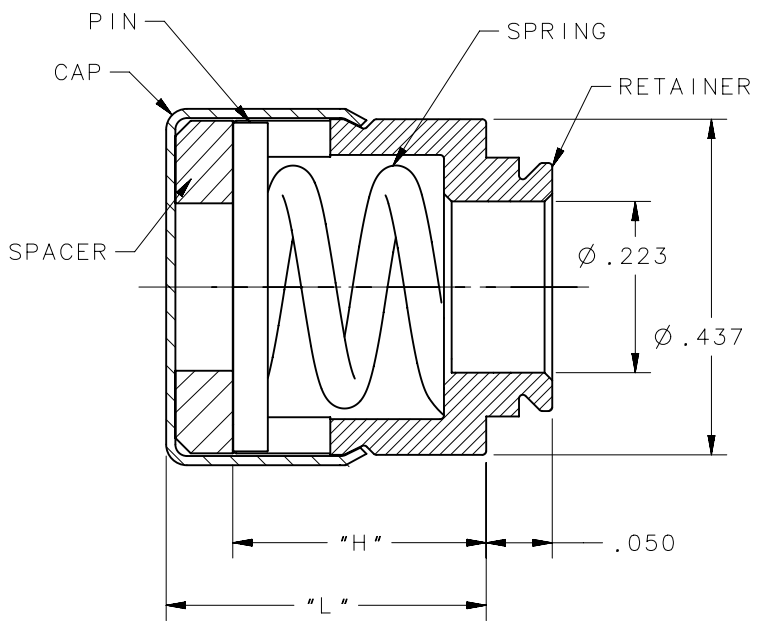
REVISION HISTORY			
REV	DATE	BY	DESCRIPTION
A	14MAR2018	DKM/DMS	PRN: P2018-0638



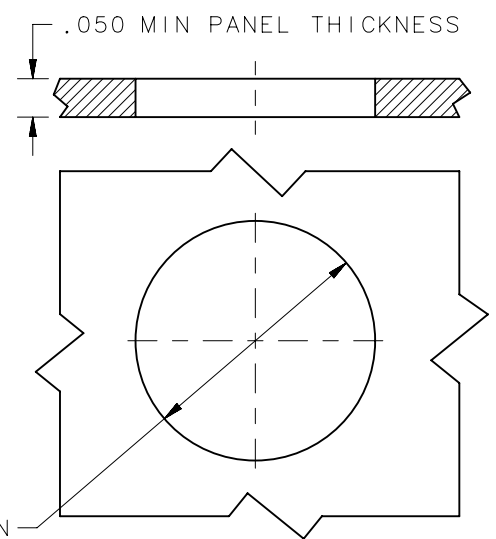
SCALE 2:1



MARKS ALIGN W/STUD HEAD - SCREW DRIVER SLOT IS IN LOCKED POSITION



SECTION A-A



PANEL PREPARATION

1219-PS3-1-Z3C	D4-SPS3-1ZBCNA	.305	.391
1219-PS3-1-Z3CT	D4-SPS3-1ZCTNA	.305	.391
1219-PS3-2-Z3C	D4-SPS3-2ZBCNA	.33	.416
1219-PS3-2-Z3CT	D4-SPS3-2ZCTNA	.33	.416
DFCI PART NUMBER	SOUTHCO PART NUMBER	DIM "H"	DIM "L"

- NOTES:
- SEE J-D5-0-3 FOR FINISH INFORMATION.
 - MATERIAL:
RETAINER: 1117 STEEL
CAP: 300 SERIES STAINLESS STEEL
SPACER: 17-7 PH SS SPRING TEMPER.
 - PRESS-IN PRESSURE: 4500 LB IN 2024-T6 ALUMINIUM.
 - MAX. SHEET HARDNESS: RB90.

THIRD ANGLE PROJECTION		 CONNECT • CREATE • INNOVATE	
INCHES [MM]			
TOLERANCES UNLESS OTHERWISE NOTED		DESCRIPTION PRESS-IN RECEPTACLE	
ALL DIMENSIONS WITHOUT TOLERANCES ARE FOR REFERENCE ONLY		SIZE A	SYSTEM NX
PER ASME Y14.5M-1994		DWG NO. J-D4-SPS3NA	
<small>EXCEPT FOR USES EXPRESSLY GRANTED IN WRITING, INFORMATION DISCLOSED HEREON IS CONFIDENTIAL AND ALL RIGHTS, PATENT AND OTHERWISE, ARE RESERVED BY SOUTHCO, INC.</small>		DRAWN BY DKM	DATE 14MAR2018
		SCALE 4:1	SHEET 1 OF 1