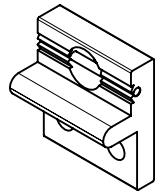
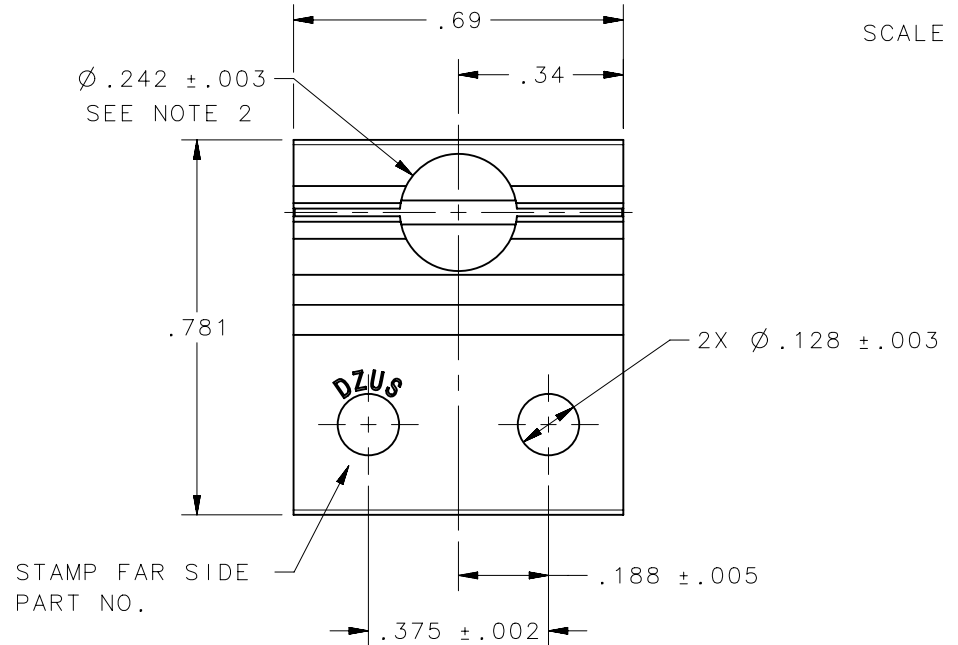
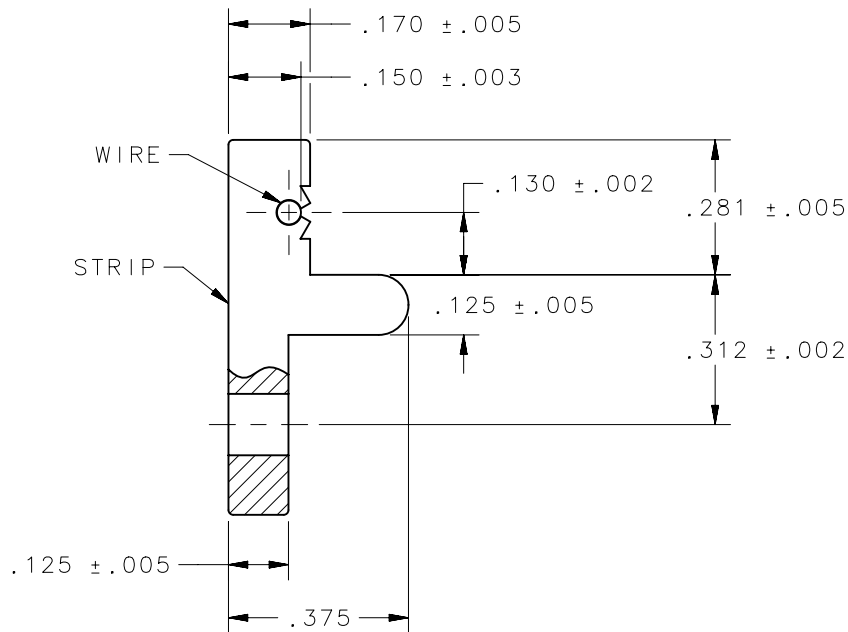


REVISION HISTORY			
REV	DATE	BY	DESCRIPTION
B	19SEP2017	YBS/VK	PRN: P2017-2318



SCALE 1:1



NOTES:

1. CHROMATE ALUMINUM CONVERSION COATING, CHROMATE PROCESS, NON-SPECIFIC COLOR, AMS-C-5541, CLASS 3 & MIL-DTL-81706A, CLASS 3, NOT RoHS COMPLIANT.

2. MATERIALS:

STRIP: 6061-T6 ALUMINUM ALLOY PER QQ-A-200/8.

WIRE: Ø.050 316 STAINLESS STEEL, PER ASTM-A-313, SPRING TEMPER.

3518-C-AC3		D5-PRC35MBNNA		SEE NOTE 1	
3518-C		D5-PRC35NA		NATURAL	
DFCI PART NUMBER		SOUTHCO PART NUMBER		FINISH	
THIRD ANGLE PROJECTION		 CONNECT • CREATE • INNOVATE			
INCHES [MM]					
TOLERANCES UNLESS OTHERWISE NOTED		DESCRIPTION			
X° ±2°		LINE RECEPTACLE			
X/X ±1/32					
.XX ±.015		SIZE	SYSTEM	DWG NO.	
.XXX ±.010		A	NX	J-D5-PRC35NA	
MACHINE FINISH: .125		DRAWN BY		DATE	SCALE
PER ASME Y14.5M-1994		CMS/NJF		13JUL2015	2.5:1
<small>EXCEPT FOR USES EXPRESSLY GRANTED IN WRITING, INFORMATION DISCLOSED HEREON IS CONFIDENTIAL AND ALL RIGHTS, PATENT AND OTHERWISE, ARE RESERVED BY SOUTHCO, INC.</small>		SHEET		1 OF 1	