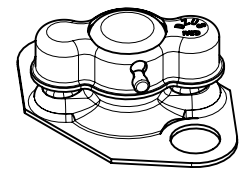
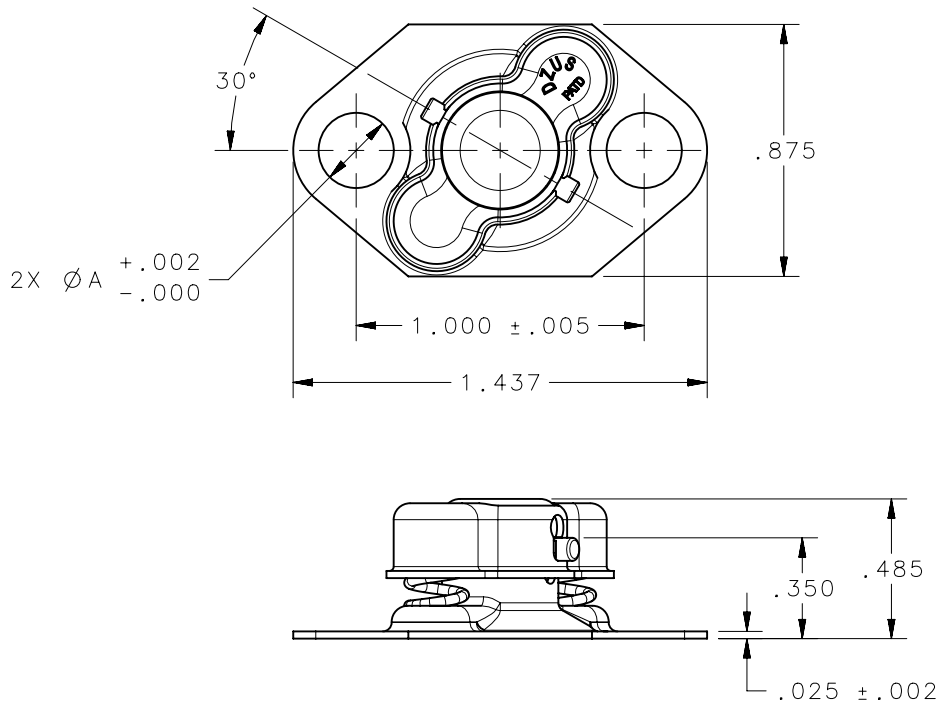
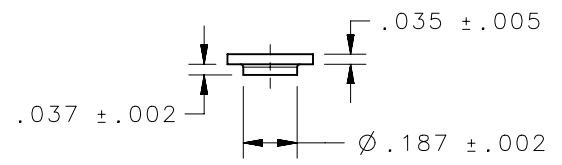
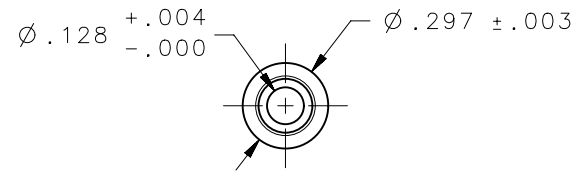


REVISION HISTORY			
REV	DATE	BY	DESCRIPTION
B	27JUL2015	CMS/NJF	PRN: P2015-1523



SCALE 1:1



SPACER DETAIL
SEE NOTE D

NOTES:

- A. CADMIUM ELECTROPLATED, AMS-QQ-P-416, TYPE 1, CLASS 2, NOT RoHS COMPLIANT.
- B. CADMIUM ELECTROPLATED YELLOW CHROMATE, AMS-QQ-P-416, TYPE II, CLASS 2, NOT RoHS COMPLIANT.
- C. ZINC ELECTROPLATE CLEAR CHROMATE & SEALER, ASTM-B-633, TYPE III, SC 2, RoHS COMPLIANT.
- D. 2 SPACERS INCLUDED WITH PART NUMBERS D4-RF5CBYNA, D4-RF5CBYNA & D4-RF5ZCTNA.

MATERIAL:
 RECEPTACLE: 4130 STEEL, HEAT TREATED TO ROCKWELL C37-40.
 SPRING CAP: 1008/1010 STEEL, PER ASTM A109/A109M.
 PIN AND SPRING: STEEL MUSIC WIRE PER ASTM A228.
 SPACERS: PER AISI 1117, 1215 STEEL OR 303 STAINLESS STEEL.

2500-18-C3C	D4-R5CBCNA	0.128	RIGID	SEE NOTE A
2500-18-C3Y	D4-R5CBYNA	0.128	RIGID	SEE NOTE B
2500-18F-C3C	D4-RF5CBCNA	0.261	FLOATING	SEE NOTE A
2500-18F-C3Y	D4-RF5CBYNA	0.261	FLOATING	SEE NOTE B
2500-18F-Z3CT	D4-RF5ZCTNA	0.261	FLOATING	SEE NOTE C
2500-18-Z3CT	D4-R5ZCTNA	0.128	RIGID	SEE NOTE C
DFCI PART NUMBER	SOUTHCO PART NUMBER	DIM "A"	RECEPTACLE TYPE	FINISH

THIRD ANGLE PROJECTION		 CONNECT • CREATE • INNOVATE		
INCHES [MM]				
TOLERANCES UNLESS OTHERWISE NOTED		DESCRIPTION		
X° ±2°		RECEPTACLE ASSEMBLY		
X/X ±1/32		SIZE	SYSTEM	DWG NO.
.XX ±.015		A	NX	J-D4-R5NA
.XXX ±.010		DRAWN BY		
PER ASME Y14.5M-1994		CMS/NJF	DATE	20JUL2015
<small>PROPRIETARY ITEM</small> <small>EXCEPT FOR USES EXPRESSLY GRANTED IN WRITING, INFORMATION DISCLOSED HEREON IS CONFIDENTIAL AND ALL RIGHTS, PATENT AND OTHERWISE, ARE RESERVED BY SOUTHCO, INC.</small>		SCALE	1.5:1	SHEET 1 OF 1