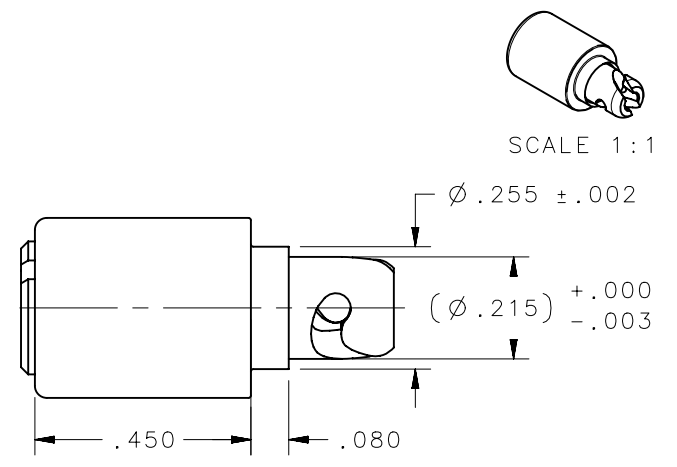
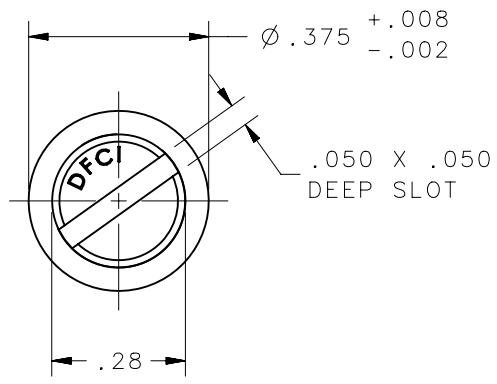
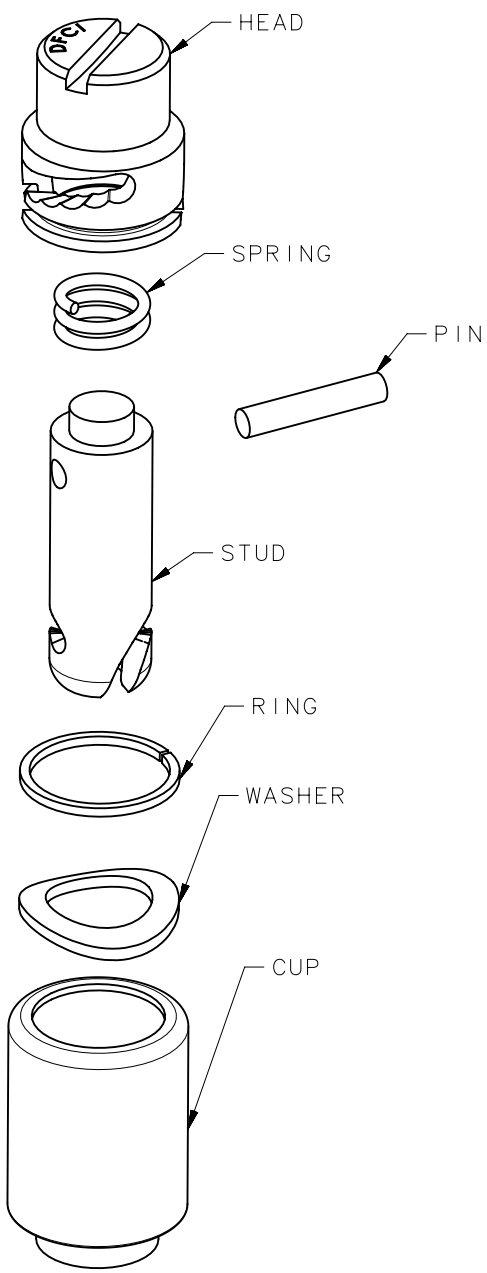


REVISION HISTORY			
REV	DATE	BY	DESCRIPTION
C	30APR2018	CMS/JW	PRN: P2018-1059



SCALE 1:1

NOTES:

- A. REMOVE ALL BURRS AND BREAK SHARP CORNERS.
- B. ALL CORNERS AND FILLETS R.005 MAX.
- C. REFER TO J-D5-0-3 FOR FINISH INFORMATION AND SPECIFICATIONS.
- D. PANEL THICKNESS RANGE = .060" - .069"
- E. ASSEMBLED PART SHOWN AS FULLY FASTENED.

		WASHER	1095 STEEL, SPRING TEMPER
		RING	HARD DRAWN PER ASTM-A227-93
		PIN	316 STAINLESS STEEL
		SPRING	17-7 PH STEEL, SPRING TEMPER
		STUD	8620 STEEL, HEAT TREAT ROCKWELL C30-38
		CUP	1008/1010, 1215, 8620 STEEL
		HEAD	8620 STEEL, CASE HARDEN
3522-S50CP2-Z3B	D5-PVS35-50CPZBBNA	ASSEMBLY	
DFCI PART NUMBER	SOUTHCO PART NUMBER	ITEM	MATERIAL

THIRD ANGLE PROJECTION		 CONNECT • CREATE • INNOVATE	
INCHES [MM]			
TOLERANCES UNLESS OTHERWISE NOTED		DESCRIPTION	
ALL DIMENSIONS WITHOUT TOLERANCES ARE FOR REFERENCE ONLY.		LINE STUD ASSEMBLY	
PROPRIETARY ITEM	PER ASME Y14.5M-1994	SIZE A	SYSTEM NX
EXCEPT FOR USES EXPRESSLY GRANTED IN WRITING, INFORMATION DISCLOSED HEREON IS CONFIDENTIAL AND ALL RIGHTS, PATENT AND OTHERWISE, ARE RESERVED BY SOUTHCO, INC.		DWG NO.	J-D5-PVS35CPNA
		DRAWN BY	CMS/NJF
		DATE	02JUL2015
		SCALE	2.5:1
		SHEET	1 OF 1