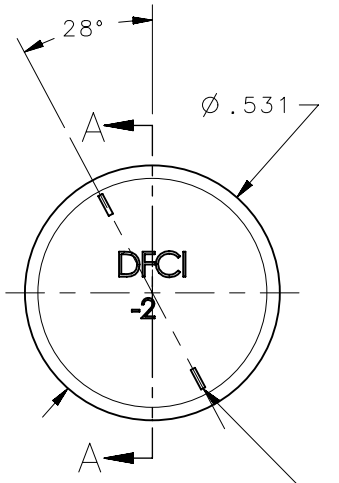


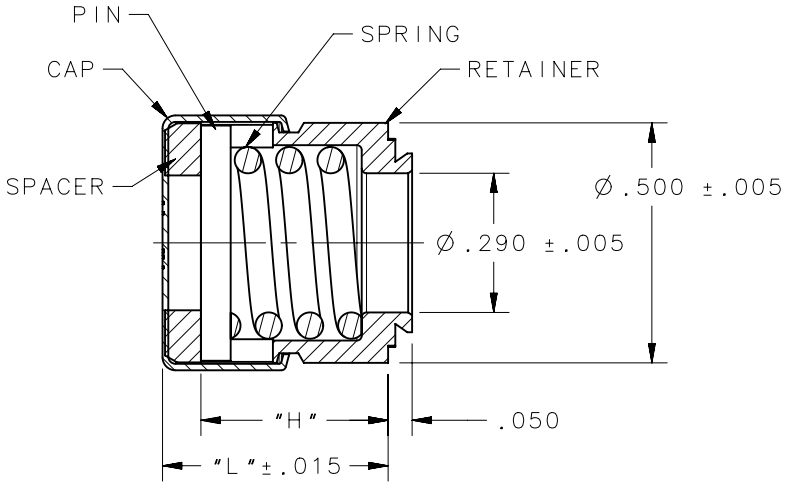
REVISION HISTORY			
REV	DATE	BY	DESCRIPTION
A	09JUN2015	CMS/NJF	INITIAL RELEASE



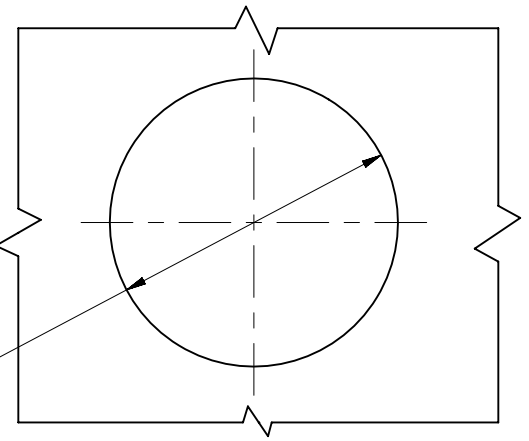
SCALE 1:1



MARKS ALIGN W/STUD  
HEAD SCREW DRIVER  
SLOT IS IN LOCKED  
POSITION.



SECTION A-A



PANEL PREPARATION

NOTES:

- SEE J-D5-0-3 FOR FINISH INFORMATION.
- MATERIAL:  
RETAINER: 1117 STEEL  
CAP: 300 SERIES STAINLESS STEEL  
SPACER: 1020 STEEL  
SPRING: 17-7 PH SS SPRING TEMPER  
PIN: 17-7 PH SS SPRING TEMPER
- PRESS-IN PRESSURE: 4500 LB IN 2024-T6 ALUMINUM.
- MAX SHEET HARDNESS: RB90

DFCI PART NUMBER	DZUS PART NUMBER	SOUTHCO PART NUMBER	- X	DIM "H"	DIM "L"
1219-PS4-2-Z3CT	SPS4-2ZCT	D4-SPS4-2ZCTNA	-2	0.390	0.495
1219-PS4-2-Z3C	SPS4-2ZBC	D4-SPS4-2ZBCNA	-2	0.390	0.495
1219-PS4-1-Z3CT	SPS4-1ZCT	D4-SPS4-1ZCTNA	-1	0.365	0.470
1219-PS4-1-Z3C	SPS4-1ZBC	D4-SPS4-1ZBCNA	-1	0.365	0.470

THIRD ANGLE PROJECTION		 CONNECT • CREATE • INNOVATE			
INCHES [MM]					
TOLERANCES UNLESS OTHERWISE NOTED		DESCRIPTION PRESS-IN RECEPTACLE			
ALL DIMENSIONS WITHOUT TOLERANCES ARE FOR REFERENCE ONLY.		SIZE A	SYSTEM NX	DWG NO. J-D4-SPS4NA	
<small>PROPRIETARY ITEM EXCEPT FOR USES EXPRESSLY GRANTED IN WRITING, INFORMATION DISCLOSED HEREON IS CONFIDENTIAL AND ALL RIGHTS, PATENT AND OTHERWISE, ARE RESERVED BY SOUTHCO, INC.</small>		DRAWN BY CMS/NJF	DATE 09JUN2015	SCALE 2.5:1	SHEET 1 OF 1
PER ASME Y14.5M-1994					