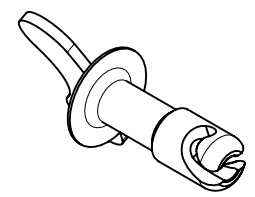
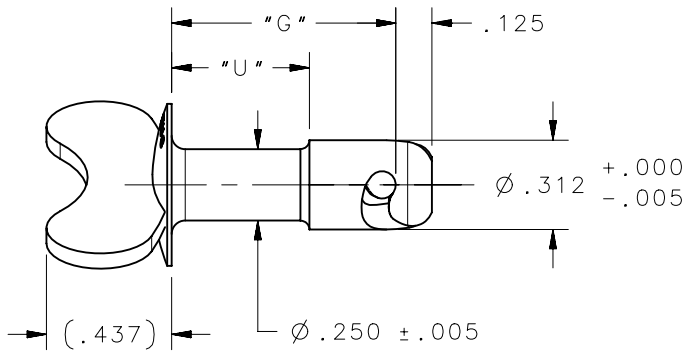
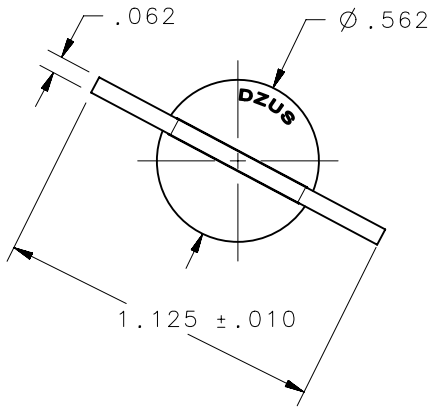


REVISION HISTORY			
REV	DATE	BY	DESCRIPTION
B	18OCT2015	CMS/NJF	PRN: P2015-2102



SCALE 1:1

DFCI PART NO.	SOUTHCO PART NO.	DIM "G"	DIM "U"	MATERIAL	FINISH
121J-W530-Z3C	D4-AJW5-30ZBCNA	0.300	0.125	SEE NOTE A	SEE NOTE C
121J-W530-Z3CT	D4-AJW5-30ZCTNA	0.300	0.125		
121J-W535-Z3C	D4-AJW5-35ZBCNA	0.350	0.125		
121J-W535-Z3CT	D4-AJW5-35ZCTNA	0.350	0.125		
121J-W540-Z3C	D4-AJW5-40ZBCNA	0.400	0.190		
121J-W540-Z3CT	D4-AJW5-40ZCTNA	0.400	0.190		
121J-W545-Z3CT	D4-AJW5-45ZCTNA	0.450	0.190		
121J-W550-Z3C	D4-AJW5-50ZBCNA	0.500	0.250		
121J-W550-Z3CT	D4-AJW5-50ZCTNA	0.500	0.250		
121J-W570-Z3CT	D4-AJW5-70ZCTNA	0.700	0.400		
121J-W590-Z3C	D4-AJW5-90ZBCNA	0.900	0.600	SEE NOTE B	
121J-W5110-SS-PAS	D4-AJW5-110SSPSNA	1.100	0.700		
121J-W5120-SS	D4-AJW5-120SSNA	1.200	0.700		
121J-W530-SS	D4-AJW5-30SSNA	0.300	0.125		
121J-W560-SS	D4-AJW5-60SSNA	0.600	0.300		
121J-W560-SS-PAS	D4-AJW5-60SSPSNA	0.600	0.300		
121J-W545-SS	D4-AJW5-45SSNA	0.450	0.190		
121J-W540-SS	D4-AJW5-40SSNA	0.400	0.190		

- NOTES:
- A. STUD: AISI 8620, HEAT TREATED TO ROCKWELL C27-33
WING: AISI C1010 - C1008 STEEL.
 - B. STUD: 303 STAINLESS STEEL
WING: 302 STAINLESS STEEL
 - C. REFER TO J-D5-0-3 FOR FINISH INFORMATION AND SPECIFICATIONS.

CAGE CODE	72794	THIRD ANGLE PROJECTION	 southco [®] CONNECT • CREATE • INNOVATE			
		INCHES [MM]				
		TOLERANCES UNLESS OTHERWISE NOTED	DESCRIPTION			
		X° ±2°	WING STUD			
		X/X ±1/32	SIZE	SYSTEM	DWG NO.	
		.XX ±.015	A	NX	J-D4-AJW5NA	
		.XXX ±.010	DRAWN BY		DATE	SHEET
		PER ASME Y14.5M-1994	CMS/NJF		22SEP2015	1 OF 1

PROPRIETARY ITEM
EXCEPT FOR USES EXPRESSLY GRANTED IN WRITING, INFORMATION DISCLOSED HEREON IS CONFIDENTIAL AND ALL RIGHTS, PATENT AND OTHERWISE, ARE RESERVED BY SOUTHCO, INC.