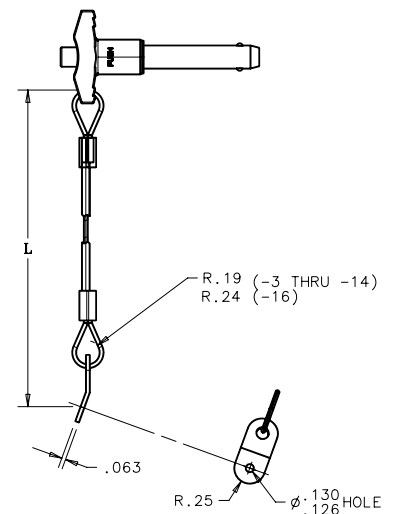
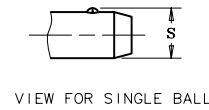
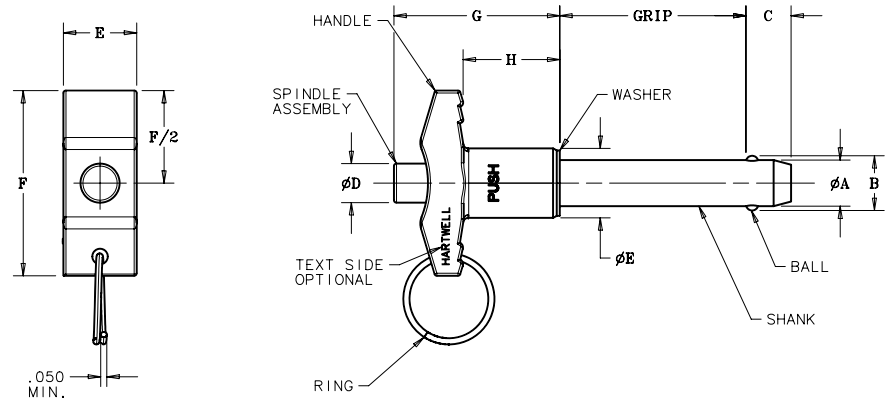


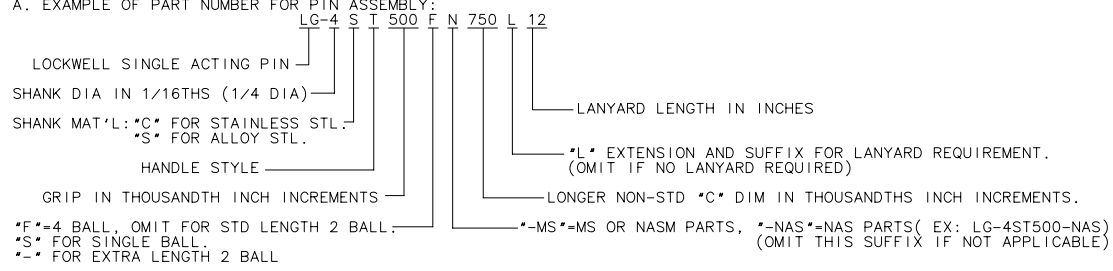
PROPRIETARY ITEM  
EXCEPT FOR USES EXPRESSLY GRANTED  
IN WRITING, INFORMATION DISCLOSED  
HEREIN IS CONFIDENTIAL AND ALL  
RIGHTS, PATENT AND OTHERWISE,  
ARE RESERVED BY SOUTHCO, INC.

REVISION HISTORY				
REV	DATE	DRAWN	CHECKED	DESCRIPTION



NOTES:

- A. EXAMPLE OF PART NUMBER FOR PIN ASSEMBLY:  
 LG-4 S T 500 F N 750 L 12  
 LOCKWELL SINGLE ACTING PIN  
 SHANK DIA IN 1/16THS (1/4 DIA)  
 SHANK MAT'L: \*C\* FOR STAINLESS STL.  
 \*S\* FOR ALLOY STL.  
 HANDLE STYLE  
 GRIP IN THOUSANDTH INCH INCREMENTS  
 \*F\*=4 BALL, OMIT FOR STD LENGTH 2 BALL.  
 \*S\* FOR SINGLE BALL.  
 \*-S\* FOR EXTRA LENGTH 2 BALL
- B. MATERIAL AND FINISH: HANDLE-ALUMINUM, BLACK ANODIZED; TAB-STAINLESS STEEL, PASSIVATED; CABLE-STAINLESS STEEL, VINYL COATED(GREEN)  
 ALL OTHER COMPONENTS-(STEEL VERSION CARBON STEEL OR ALLOY STEEL, CADMIUM PLATED OR ALUMINUM ALLOY  
 (STAINLESS STEEL VERSION) STAINLESS STEEL, PASSIVATED.



TAB	-			
SLEEVE	-			
CABLE	-			
BALL	-			
SPINDLE ASSEMBLY	-			
SHANK	-			
SPRING	-			
WASHER	-			
WASHER	-			
HANDLE	-			
RING	-			
PIN ASSEMBLY	SEE NOTE A	SEE NOTE B	SEE NOTE B	
ITEM	PART NUMBER	MATERIAL	FINISH	

PIN DASH NO.	A DIA	B	C	D DIA	E DIA	F	G		S
	+ .0000 - .0015		+ .000 - .030				MAX	MIN	
-3	0.1885	.225-.215	0.260	0.255	.500-.380	1.815-1.750	1.270	0.800	0.210
-4	0.2485	.292-.284	0.290	0.255	.500-.380	1.815-1.750	1.270	0.800	0.280
-5	0.3110	.377-.370	0.330	0.255	.500-.380	1.815-1.750	1.270	0.800	0.353
-6	0.3735	.443-.435	0.365	0.305	.625-.510	2.000-1.935	1.450	0.850	0.422
-7	0.4360	.512-.504	0.380	0.375	.625-.510	2.065-2.000	1.470	0.850	0.488
-8	0.4985	.598-.589	0.460	0.440	.800-630	2.345-2.250	1.600	0.885	0.560
-9	0.5610	.671-.661	0.510	0.463	.800-630	2.345-2.250	1.600	0.885	0.628
-10	0.6235	.753-.745	0.580	0.512	.975-.810	3.000-2.250	1.700	0.980	0.696
-12	0.7485	.892-.882	0.670	0.640	1.000-.810	3.000-2.250	1.720	1.030	0.830
-14	0.8735	1.048-1.041	0.760	0.760	1.320-1.120	3.000-2.750	2.140	1.310	0.965
-16	0.9985	1.222-1.214	0.890	0.890	1.320-1.180	3.000-2.750	2.140	1.310	1.110

THIRD ANGLE PROJECTION

ALL DIMENSIONS WITHOUT TOLERANCES ARE FOR REFERENCE ONLY.

**southco**  
CONNECT · CREATE · INNOVATE

TITLE  
**ASSEMBLY, LOCKWELL PIN,  
"T" HANDLE SINLE ACTING**

SIZE SYSTEM  
B I-DEAS

DWG NO  
J-LG-3THRU-16-T

VOLUME XXXXmm<sup>3</sup> MASS XXXXg

DRWN/CHKD VMV/VGV DATE 31JUL2007 SCALE NTS SHEET 1 OF 1