



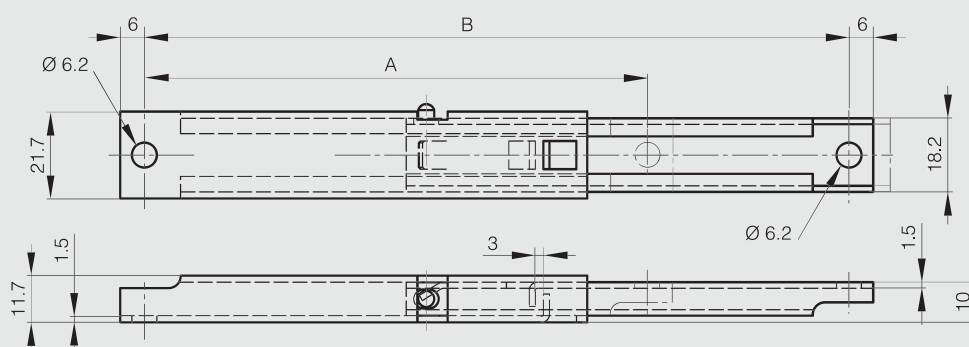
Support stays

Support stays with manual release

A = closed dimension.
 B = extended dimension.
 Load capacity: 50 kg.
 Push button release.



Part number	Material	Finish	A	B	Weight (g)
24-1-3558	304 stainless steel	raw	125	175	101
24-1-3559	304 stainless steel	raw	150	225	125
24-1-3560	304 stainless steel	raw	175	275	145



Bracket

Complete with M6 screw, M6 nut and 3 mm thick washer (included).
 For part numbers 24-1-3558, 24-1-3559 and 24-1-3560.



Part number	Material	Finish	A	B	Weight (g)
99-1-3558	stainless steel	raw	50	26	60

