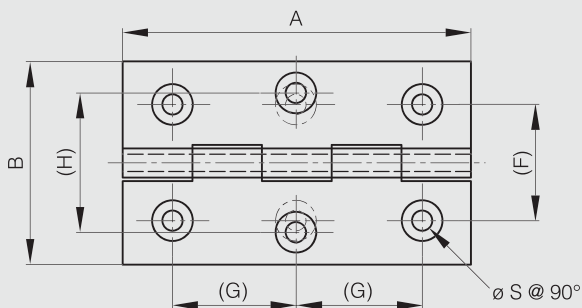


Brass hinges - 6 holes A

304 stainless steel pin.



Part number	Material	Finish	A	B	C	D	E	F	G	S	Weight (g)
72-7-3663	brass	raw	40	35	2	3	2.5	21	14	3	25
72-7-3664	brass	raw	40	40	2	3	2.5	23	14	3	29
72-7-3665	brass	raw	50	30	2	3	2.5	17.5	17.5	3	27



Brass hinges - 6 holes B

304 stainless steel pin.



Part number	Material	Finish	A	B	C	D	E	F	G	H	S	Weight (g)
72-7-3668	brass	raw	70	40	2	3	2.25	23	24	27	3.5	52
72-7-3671	brass	raw	80	60	3	4	3.5	28	28.5	45	4	130

