

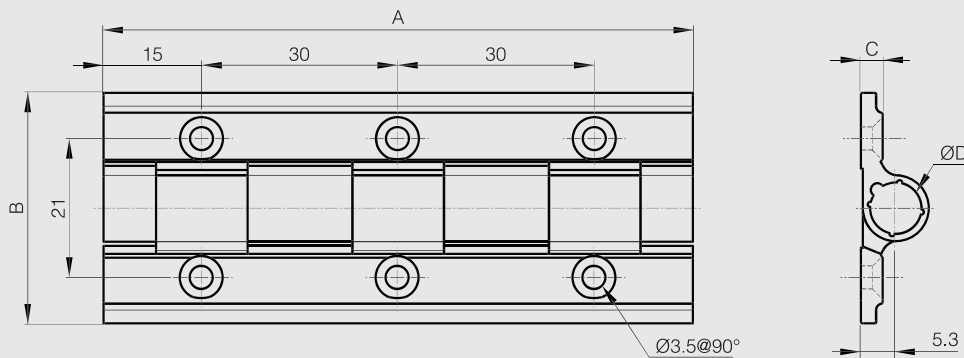
Spring hinges - aluminium profile 0.70 N.m - diameter 8



Opening spring force:

M(0°): 0.7 N.m / M(90°): 0.5 N.m / M(180°): 0.3 N.m

| Part number | Material | Finish | A | B | C | D | Note | Weight (g) |
|----------------------|-------------|----------------|----|----|-----|---|----------------|------------|
| NEW 72-1-4314 | 6060 T5 alu | clear anodised | 90 | 35 | 3.3 | 8 | opening spring | 40 |
| NEW 72-1-4315 | 6060 T5 alu | black anodised | 90 | 35 | 3.3 | 8 | opening spring | 40 |



Spring hinges - aluminium profile 0.90 N.m - diameter 8



Opening spring force:

M(0°): 0.92 N.m / M(90°): 0.7 N.m / M(180°): 0.44 N.m

| Part number | Material | Finish | A | B | C | D | Note | Weight (g) |
|----------------------|-------------|----------------|-----|----|-----|---|----------------|------------|
| NEW 72-1-4316 | 6060 T5 alu | clear anodised | 120 | 35 | 3.3 | 8 | opening spring | 50 |
| NEW 72-1-4317 | 6060 T5 alu | black anodised | 120 | 35 | 3.3 | 8 | opening spring | 50 |

