



### Forged hinges - 3 knuckles

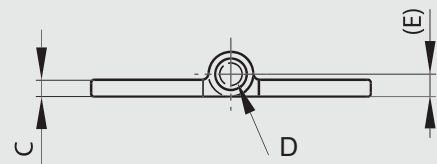
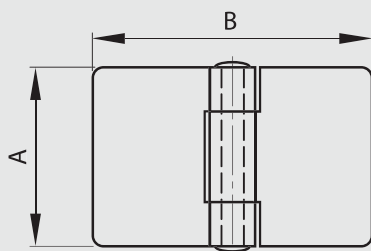
Riveted pin.

Other dimensions or variants are available on request.

304 stainless steel pin.



| Part number | Material            | Finish | A  | B  | C | D | E | Note                | Weight (g) |
|-------------|---------------------|--------|----|----|---|---|---|---------------------|------------|
| 72-1-3990   | 304 stainless steel | raw    | 50 | 50 | 3 | 4 | 4 | 4 MR (railway code) | 72         |
| 72-1-4186   | 304 stainless steel | raw    | 50 | 80 | 3 | 4 | 4 | 6 MR (railway code) | 113        |
| 72-1-4187   | 304 stainless steel | raw    | 50 | 80 | 5 | 6 | 6 | 9 MR (railway code) | 182        |



### Forged hinges with reversed leaves - 3 knuckles

Riveted pin.

Other dimensions or variants are available on request.

304 stainless steel pin.



| Part number | Material            | Finish | A  | B  | C | D | E | Note                 | Weight (g) |
|-------------|---------------------|--------|----|----|---|---|---|----------------------|------------|
| 72-1-3992   | 304 stainless steel | raw    | 50 | 50 | 3 | 4 | 4 | 20 MR (railway code) | 71         |
| 72-1-3993   | 304 stainless steel | raw    | 50 | 80 | 3 | 4 | 4 | 22 MR (railway code) | 112        |

