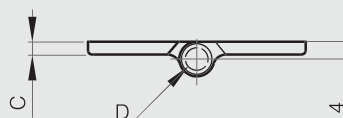
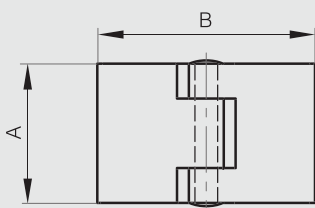


### Aluminium hinges - 50 mm width

Hinge with 304 stainless steel riveted pin.



Part number	Material	Finish	A	B	C	D	Weight (g)
72-1-3635	6060 T5 alu	raw	32	50	3	5.2	20
72-1-3636	6060 T5 alu	raw	50	50	3	5.2	30



### Aluminium hinges with reversed leaves - 50 mm width

Hinge with 304 stainless steel riveted pin.



Part number	Material	Finish	A	B	C	D	Weight (g)
72-1-3637	6060 T5 alu	raw	32	50	3	5.2	20
72-1-3638	6060 T5 alu	raw	50	50	3	5.2	30

