

Forged hinges - 3 knuckles

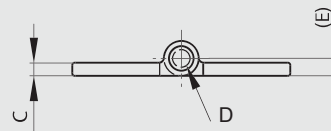
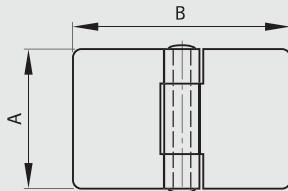
Riveted pin.

Other dimensions or variants are available on request.

Raw steel pin for raw steel hinges. 304 stainless steel pin for 304 stainless steel hinges.



Part number	Material	Finish	A	B	C	D	E	Note	Weight (g)
72-1-3346	steel	raw	32	32	3	4	4	1 MR (railway code)	33
72-1-3348	steel	raw	32	50	3	4	4	3 MR (railway code)	47
72-1-3349	steel	raw	50	50	3	4	4	4 MR (railway code)	75
72-1-3352	steel	raw	50	50	5	6	6	7 MR (railway code)	122
72-1-3351	steel	raw	50	80	3	4	4	6 MR (railway code)	108
72-1-3354	steel	raw	50	80	5	6	6	9 MR (railway code)	182
72-1-3990	304 stainless steel	raw	50	50	3	4	4	4 MR (railway code)	72
72-1-4186	304 stainless steel	raw	50	80	3	4	4	6 MR (railway code)	113
72-1-4187	304 stainless steel	raw	50	80	5	6	6	9 MR (railway code)	182



Forged hinges with reversed leaves - 3 knuckles

Riveted pin.

Other dimensions or variants are available on request.

Raw steel pin for raw steel hinges. 304 stainless steel pin for 304 stainless steel hinges.



Part number	Material	Finish	A	B	C	D	E	Note	Weight (g)
72-1-3380	steel	raw	32	50	3	4	4	17 MR (railway code)	33
72-1-3381	steel	raw	50	50	3	4	4	20 MR (railway code)	71
72-1-3384	steel	raw	50	50	5	6	6	23 MR (railway code)	122
72-1-3383	steel	raw	50	80	3	4	4	22 MR (railway code)	104
72-1-3386	steel	raw	50	80	5	6	6	25 MR (railway code)	182
72-1-3992	304 stainless steel	raw	50	50	3	4	4	20 MR (railway code)	71
72-1-3993	304 stainless steel	raw	50	80	3	4	4	22 MR (railway code)	112

