

# Hinges with dual function

## Rolled knuckle spring hinges

### Opening spring hinges 240 mm long



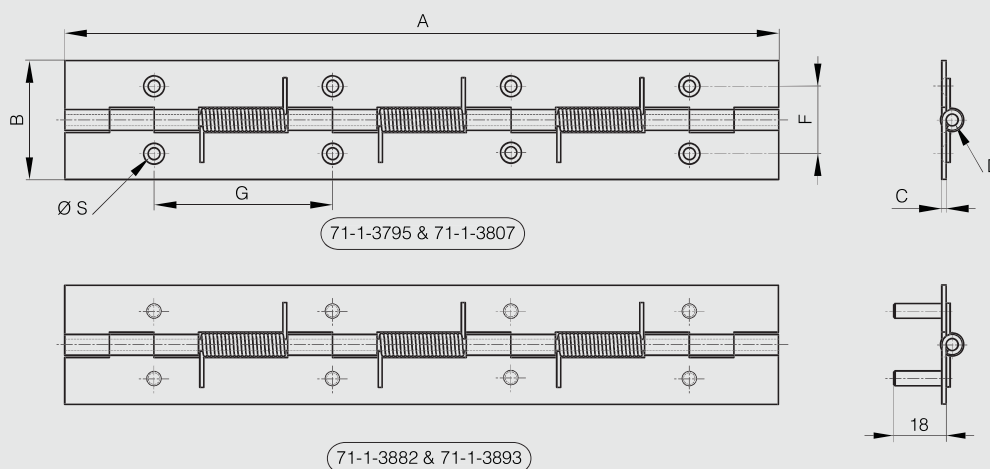
Opening spring force:

M(0°): 2.55 N.m / M(90°): 1.68 N.m / M(180°): 0.84 N.m

Stainless steel spring.



Part number	Material	Finish	A	B	C	D	F	G	S	Note	Weight (g)
71-1-3801	steel	raw	240	40	1.5	4				undrilled	164
71-1-3807	steel	zinc plated	240	40	1.5	4	22.7	60	4	drilled	165
NS 71-1-3893	steel	zinc plated	240	40	1.5	4	22.7	60	4	with M5 studs	187
71-1-3789	304 stainless steel	raw	240	40	1.5	4				undrilled	165
71-1-3795	304 stainless steel	raw	240	40	1.5	4	22.7	60	4	drilled	164
NS 71-1-3882	304 stainless steel	raw	240	40	1.5	4	22.7	60	4	with M5 studs	187



### Closing spring hinges 240 mm long



Closing spring force:

M(0°): 0.84 N.m / M(90°): 1.68 N.m / M(180°): 2.55 N.m

Stainless steel spring.



Part number	Material	Finish	A	B	C	D	F	G	S	Note	Weight (g)
71-1-3804	steel	raw	240	40	1.5	4				undrilled	164
71-1-3810	steel	zinc plated	240	40	1.5	4	22.7	60	4	drilled	164
NS 71-1-3894	steel	zinc plated	240	40	1.5	4	22.7	60	4	with M5 studs	187
71-1-3792	304 stainless steel	raw	240	40	1.5	4				undrilled	165
71-1-3798	304 stainless steel	raw	240	40	1.5	4	22.7	60	4	drilled	164
NS 71-1-3792	304 stainless steel	raw	240	40	1.5	4	22.7	60	4	with M5 studs	187

