



Stainless steel range - Hinges

Friction hinges

Hinges with or without friction in stainless steel - friction torque 3 N.m

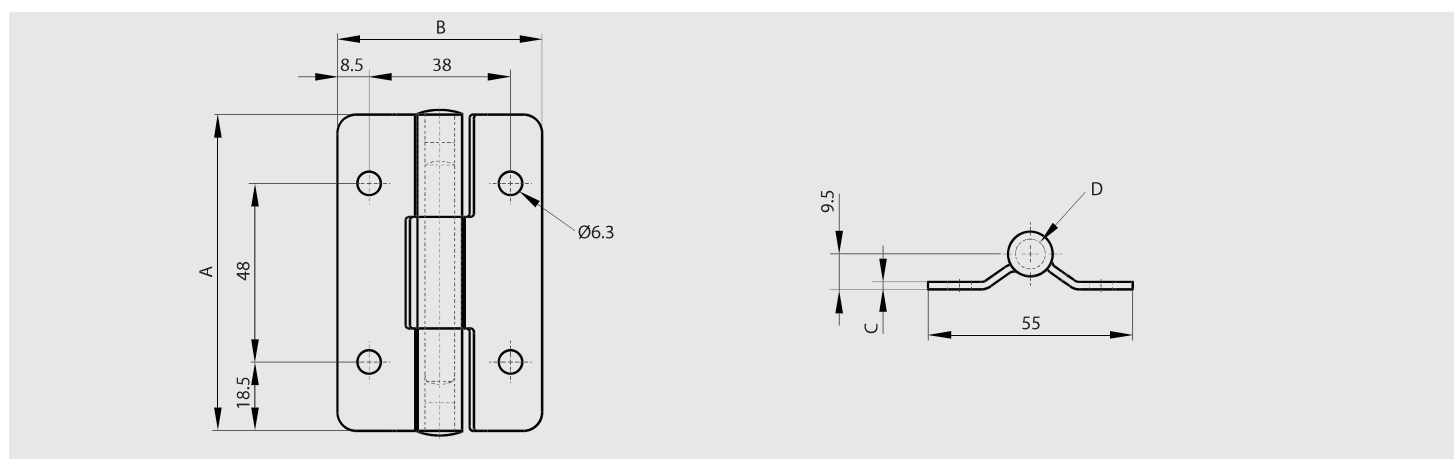
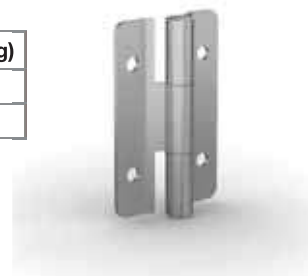


Constant torque. Stable at various temperatures. (from -40°C to +80°C)

Pin in stainless steel.

Plugs in polyethylene.

	Part number	Material	Finish	A	B	C	D	Torque	Pin material	Note	Weight (g)
NEW	62-1-3719	301 stainless steel	raw	85	55	2	8	3 N.m	stainless steel	with friction	121
	62-1-3711	304 stainless steel	raw	85	55	2	8		304 stainless steel	no torque	122



Hinges with or without friction in stainless steel - friction torque 4.5 N.m



Constant torque. Stable at various temperature (from -40°C to +80°C)

Pin in stainless steel.

Plugs in polyethylene.

	Part number	Material	Finish	A	B	C	D	Torque	Pin material	Note	Weight (g)
NEW	62-1-3747	301 stainless steel	raw	115	55	2	8	4.5 N.m	stainless steel	with friction	170
NEW	62-1-3748	304 stainless steel	raw	115	55	2	8		304 stainless steel	no torque	170

