



# Stainless steel range - Hinges

## Friction hinges

### Hinges with or without friction in stainless steel - friction torque 5 N.m

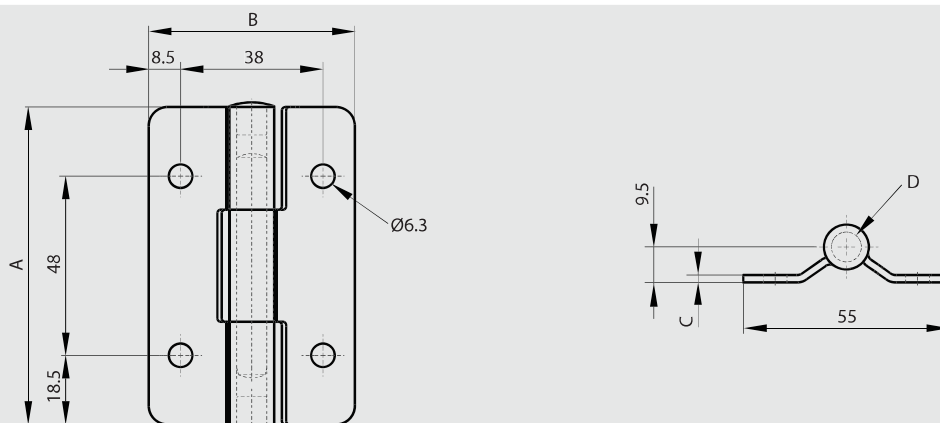
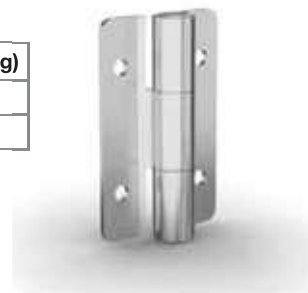


Constant torque. Stable at various temperatures (from -40° to 80°C).

Pin in stainless steel.

Plugs in polyethylene.

	Part number	Material	Finish	A	B	C	D	Torque	Pin material	Note	Weight (g)
<b>NEW</b>	<b>62-1-3720</b>	301 stainless steel	raw	85	55	2	12	5 N.m	stainless steel	with friction	155
	<b>62-1-3713</b>	304 stainless steel	raw	85	55	2	12		304 stainless steel	no torque	161



### Hinges with or without friction in stainless steel - friction torque 8 N.m



Constant torque. Stable at various temperatures (from -40°C to +80°C).

Pin in stainless steel.

Plugs in polyethylene.

	Part number	Material	Finish	A	B	C	D	Torque	Pin material	Note	Weight (g)
<b>NEW</b>	<b>62-1-3732</b>	301 stainless steel	raw	85	65	3	12	8 N.m	stainless steel	with friction	230
<b>NEW</b>	<b>62-1-3733</b>	304 stainless steel	raw	85	65	3	12		304 stainless steel	no torque	230

