

Square design hinges with countersunk holes

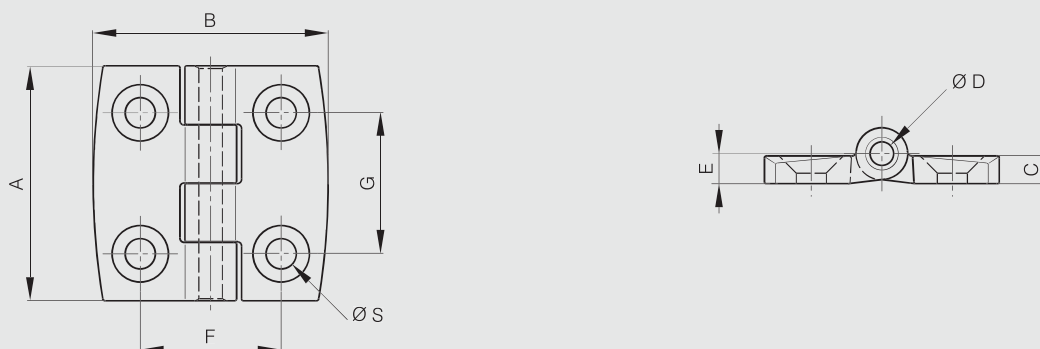
Hinges are made of 30% GF polyamide, pins are in 316L stainless steel.

UL 94 V-0 classification: please contact us.

White color: please contact us.



Part number	Material	Finish	A	B	C	D	E	F	G	S	Weight (g)
54-1-3564	polyamide	black	30	30	3	3	3.5	18	18	3.2	6
54-1-3565	polyamide	black	40	40	5.2	4	5.7	25	25	5.3	13
54-1-3566	polyamide	black	50	50	5.9	5	6.4	30	30	6.4	23
54-1-3567	polyamide	black	60	60	6.5	6	7	36	36	6.4	40



Square design hinges with studs

Hinges are made of 30% GF polyamide, pin is in 316L stainless steel and studs are in 304 stainless steel.

UL 94 V-0 classification: please ask us.

White color: please ask us.



Part number	Material	Finish	A	B	C	D	E	F	G	Weight (g)
54-1-3568	polyamide	black	60	60	6.5	6	7	36	36	62

