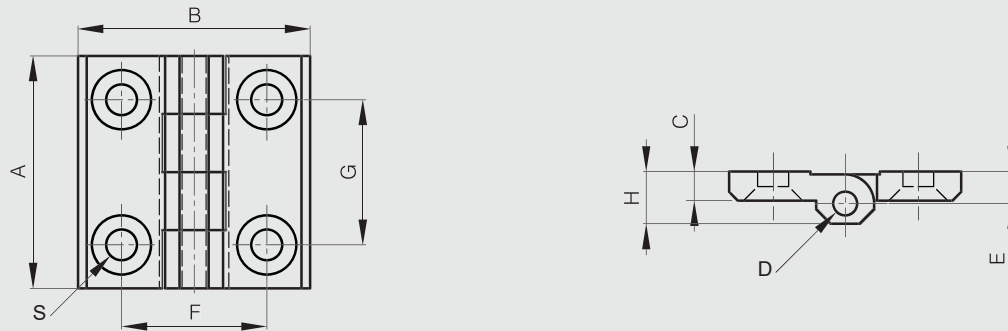


Polyamide hinges with countersunk holes

Hinges are made of 30% GF polyamide, pins are in 304 stainless steel.



| Part number | Material | Finish | A | B | C | D | E | F | G | H | S | Weight (g) |
|-------------|-----------|--------|----|----|---|---|-----|----|----|------|-----|------------|
| 54-1-3029 | polyamide | black | 40 | 40 | 5 | 4 | 5.5 | 25 | 25 | 9 | 5.3 | 14 |
| 54-1-3030 | polyamide | black | 50 | 50 | 6 | 6 | 6.5 | 30 | 30 | 11.5 | 6.4 | 29 |



Polyamide hinges with studs

Hinges are made of 30% GF polyamide, pins are in 304 stainless steel.



| Part number | Material | Finish | A | B | C | D | E | F | G | H | L | M | Weight (g) |
|-------------|-----------|--------|----|----|---|---|-----|----|----|------|----|----|------------|
| 54-1-3031 | polyamide | black | 40 | 40 | 5 | 4 | 5.5 | 25 | 25 | 9 | 11 | M5 | 56 |
| 54-1-3032 | polyamide | black | 50 | 50 | 6 | 6 | 6.5 | 30 | 30 | 11.5 | 15 | M6 | 76 |

