

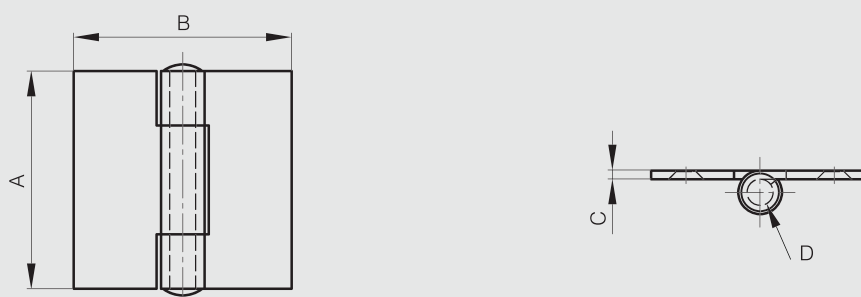


### Square hinges with no offset leaf and riveted pin - no holes

Riveted pin.



Part number	Material	Finish	A	B	C	D	Weight (g)
52-1-3679	304 stainless steel	raw	40	40	2	4	37
52-1-3694	304 stainless steel	raw	50	50	2	6	62
52-1-3695	304 stainless steel	raw	60	60	2	6	82
52-1-3864	304 stainless steel	raw	70	70	2	6	112
52-1-3865	304 stainless steel	raw	80	80	2.5	6	168
52-1-3866	304 stainless steel	raw	100	100	2.5	6	250
52-1-3869	316L stainless steel	raw	40	40	2	4	37
52-1-3870	316L stainless steel	raw	50	50	2	6	61
52-1-3871	316L stainless steel	raw	60	60	2	6	90



### Square hinges with no offset leaf and riveted pin - with 4 holes

Riveted pin.



Part number	Material	Finish	A	B	C	D	F	G	S	Weight (g)
52-1-3861	304 stainless steel	raw	40	40	2	4	8	24	4	35
52-1-3862	304 stainless steel	raw	50	50	2	6	8	34	4.5	61
52-1-3863	304 stainless steel	raw	60	60	2	6	8	40	4.5	83
52-1-3874	316L stainless steel	raw	40	40	2	4	8	24	4	35
52-1-3710	316L stainless steel	raw	50	50	2	6	8	34	4.5	62
52-1-3875	316L stainless steel	raw	60	60	2	6	8	40	4.5	85

