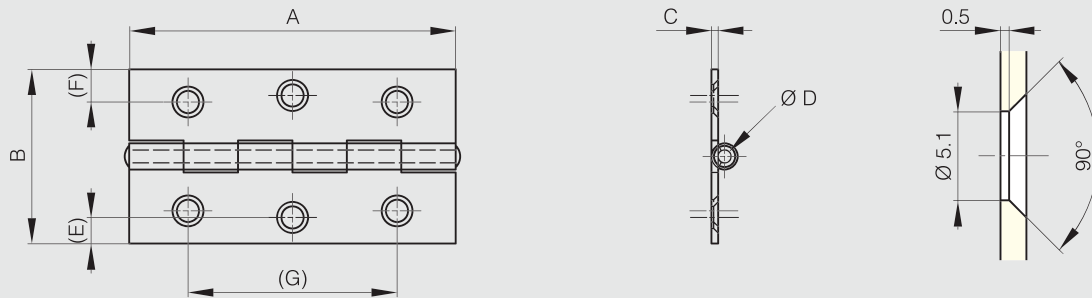


Hinge 75 x 40 mm



Part number	Material	Finish	A	B	C	D	E	F	G	Weight (g)
52-1-3990	304 stainless steel	raw	75	40	1.5	3	6	7.5	48	46



Small hinges 30 to 50 mm long



Part number	Material	Finish	A	B	C	D	F	G	S	Note	Weight (g)
50-7-3618	steel	raw	30	19	1	2.4				undrilled / 3 knuckles	6
50-7-3617	steel	raw	30	19	1	2.4	4	19	3.3	drilled / 3 knuckles	6
50-7-3557	steel	raw	35	21.8	0.8	2.4				undrilled / headed pin / 5 knuckles	8
50-7-3549	steel	raw	35	21.8	0.8	2.4	4.2	22	3.5	drilled / headed pin / 5 knuckles	7
50-7-3550	steel	raw	40	25	0.9	2.7	4.5	27	3.2	drilled / headed pin / 5 knuckles	11
50-7-3551	steel	raw	50	29	1	2.4	7	35.2	3.9	drilled / 5 knuckles	16

