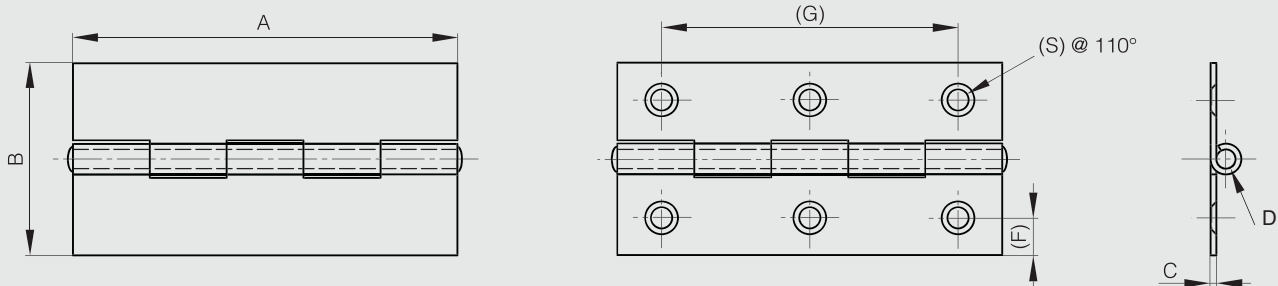


### Hinges 60 to 100 mm long

All hinges have headed pins except 50-7-3552, 50-7-3553, 50-7-3554.



Part number	Material	Finish	A	B	C	D	F	G	S	Note	Weight (g)
50-7-3560	steel	raw	60	34.8	1	3				undrilled / headed pin / 5 knuckles	23
50-7-3552	steel	raw	60.5	36.4	1	3.5	8.75	44	3.9	drilled / 6 knuckles	23
50-7-3553	steel	raw	70	41.5	1	3.5	8.7	52	4.5	drilled / 7 knuckles	39
50-7-3554	steel	raw	80.5	45.4	1	3.5	9.6	59.3	4.6	drilled / 8 knuckles	47
<b>NEW</b> 50-1-3564	steel	raw	100	50	1.5	5				undrilled / headed pin / 5 knuckles	92
<b>NEW</b> 50-1-3556	steel	raw	100	50	1.5	5	9.7	77	5.5	drilled / headed pin / 5 knuckles	89



### Hinge 100 x 84 mm

304 stainless steel riveted pin.



Part number	Material	Finish	A	B	C	D	S	Weight (g)
50-1-4174	steel	zinc plated	100	84	3	6	5.5	250

