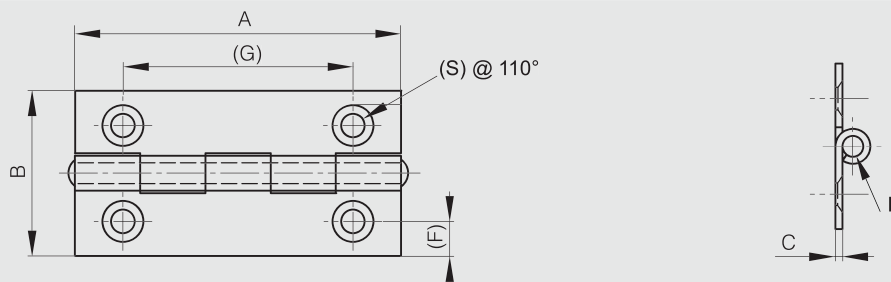


Hinge 50 x 30 mm

Drilled hinge with riveted pin.



Part number	Material	Finish	A	B	C	D	F	G	S	Weight (g)
52-1-3571	304 stainless steel	raw	50	30	1	3	6.5	35	3.5	18



Hinges 50 x 40 mm

Available in 2 versions: with holes or countersunk holes



Part number	Material	Finish	A	B	C	D	F	G	S	Note	Weight (g)
50-1-3525	steel	zinc plated	50	40	1.2	3	8.5	36	5	drilled	26
50-1-3526	steel	zinc plated	50	40	1.2	3	8.5	36	5	countersunk version	24
52-1-3592	304 stainless steel	raw	50	40	1.2	3	8.5	36	5	countersunk version	24
52-1-3607	304 stainless steel	raw	50	40	1.2	3	8.5	36	5	drilled	25

