



# Stainless steel range - Hinges

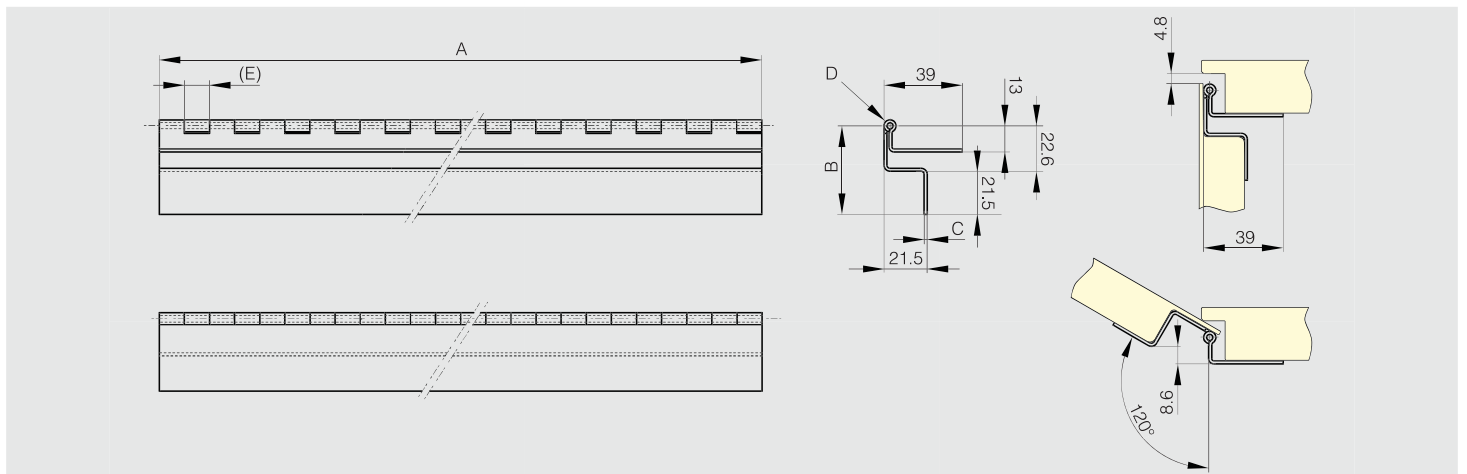
Concealed hinges for surface mounted doors or nested doors

## Concealed hinges with two cranked leaves - undrilled - 120° opening - version A

Hinges for side door of baggage compartment (bus and coach, bodywork...)



Part number	Material	Finish	A	B	C	D	E	Weight (g)
39-1-3885	304 stainless steel	raw	300	44.1	1.5	3	12.5	440
39-1-3887	304 stainless steel	raw	600	44.1	1.5	3	12.5	880



## Concealed hinges with two cranked leaves - drilled - 120° opening - version A

Hinges for side door of baggage compartment (bus and coach, bodywork...)

Use rivets for 4.2 diameter holes (door side).

Use self-drilling screws for 12.2 diameter holes (frame side).



Part number	Material	Finish	A	B	C	D	E	G	H	Weight (g)
39-1-3886	304 stainless steel	raw	300	44.1	1.5	3	12.5	160	70	430
39-1-3888	304 stainless steel	raw	600	44.1	1.5	3	12.5	160	60	870

