

Headed pin BT for Modulo system

This pin combined with a plug (VA) enables you to make a hinge pin for Modulo hinges.



Part number	Material	Finish	D	E	L	Weight (g)
27-1-3826	steel	zinc plated	6	3	66	16
27-1-3827	steel	zinc plated	8	4	86	36
27-1-3828	steel	zinc plated	10	5	106	68
27-1-3829	304 stainless steel	raw	6	3	66	16
27-1-3830	304 stainless steel	raw	8	4	86	36
27-1-3831	304 stainless steel	raw	10	5	106	68

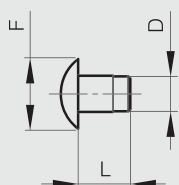


Plug (VA) for Modulo system

This plug combined with a headed pin (BT) enables you to make a hinge pin for Modulo hinges.

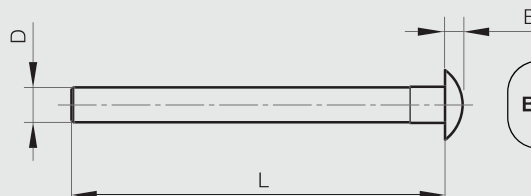


Part number	Material	Finish	D	F	L	Weight (g)
27-1-3832	steel	zinc plated	6	12	12	3
27-1-3833	steel	zinc plated	8	16	12	6
27-1-3834	steel	zinc plated	10	20	12	11
27-1-3835	304 stainless steel	raw	6	12	12	3
27-1-3836	304 stainless steel	raw	8	16	12	6
27-1-3837	304 stainless steel	raw	10	20	12	11



VA

VAse
Plug
Stopfen



BT

Broche à Tête
Headed pin
Stift mit Kopf