

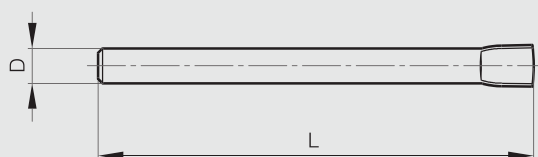


### Expanded pin BG for Modulo system

This pin alone enables you to make a hinge pin for Modulo hinges.



Part number	Material	Finish	D	L	Weight (g)
27-1-3823	304 stainless steel	raw	6	80	18
27-1-3824	304 stainless steel	raw	8	100	39
27-1-3825	304 stainless steel	raw	10	120	74



**BG** Broche Gonflée  
Expanded pin  
Gestauchter Stift

### Headed pin BT for Modulo system

This pin combined with a plug (VA) enables you to make a hinge pin for Modulo hinges.



Part number	Material	Finish	D	E	L	Weight (g)
27-1-3829	304 stainless steel	raw	6	3	66	16
27-1-3830	304 stainless steel	raw	8	4	86	36
27-1-3831	304 stainless steel	raw	10	5	106	68

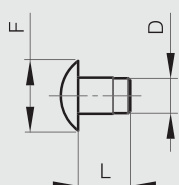


### Plug (VA) for Modulo system

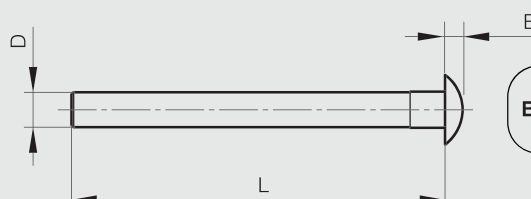
This plug combined with a headed pin (BT) enables you to make a hinge pin for Modulo hinges.



Part number	Material	Finish	D	F	L	Weight (g)
27-1-3835	304 stainless steel	raw	6	12	12	3
27-1-3836	304 stainless steel	raw	8	16	12	6
27-1-3837	304 stainless steel	raw	10	20	12	11



**VA** Vase  
Plug  
Stopfen



**BT** Broche à Tête  
Headed pin  
Stift mit Kopf