

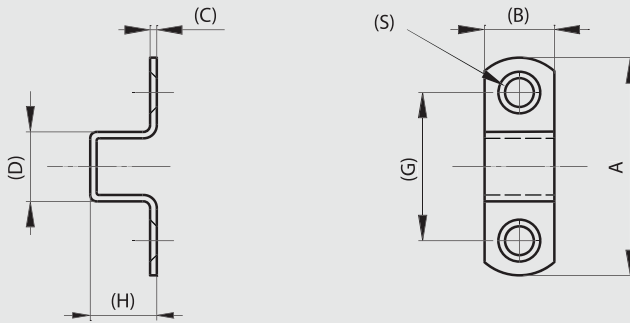


Small slam latches

Strikes for latches with dimension A = 35, 50 and 70 mm

BRASS STEEL

Part number	Material	Finish	A	B	C	D	G	H	S	Weight (g)
16-1-3633	steel	zinc plated	35	11	1.2	11.5	23	11.5	3.5	5
16-1-3634	brass	chrome plated	35	11	1.2	11.5	23	11.5	3.5	5
16-1-3636	steel	zinc plated	50	16	1.5	16	34	16	4.8	12
16-1-3637	brass	chrome plated	50	16	1.5	16	34	16	4.8	13
16-1-3639	steel	zinc plated	68.5	22	2	21	43.5	21	7	32
16-1-3640	brass	chrome plated	68.5	22	2	21	43.5	21	7	33



Springloaded bolt - reversible bolt

Slam bolt - reversible.

Bolt can be manually unassembled to be positioned 'nose-up' or 'nose-down'.

Minimum load 50 N for full bolt travel.

STAINLESS STEEL STEEL

Part number	Material	Finish	A	B	C	K	Note	Weight (g)
16-7-4220	steel	zinc plated	63.2	57	17.2	7	bolt delivered 'nose-up'	185
16-7-3835	304 stainless steel	raw	63.2	57	17.2	7	bolt delivered 'nose-down'	185

