



Snap-in knuckle catch in plastic

Snap-in type body for easy installation on sheet metal applications.

3 panel thicknesses (E): 0.8 mm, 1.0 mm and 1.2 mm

Cut-out dimensions vary depending on panel thickness.

Internal catch body tolerance of 1.5 mm for ease of alignment.

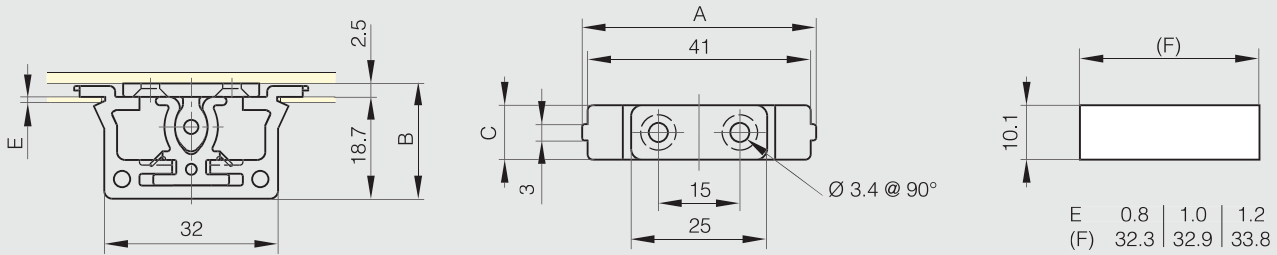
Push-in force: 2.0 kg.

Pulling force: 2.0 kg.

Body in polyacetal (POM) and strike in polyamide (PA).



Part number	Material	Finish	A	B	C	Force	Weight (g)
16-7-4214	polymer	white	43	21.2	10	2kg	5



Plastic catch

Push in force : 5.7 kg

Pulling force : 7.1 kg

Body in polyacetal (POM) and strike in polyamide (PA).



Part number	Material	Finish	A	B	C	Force	Weight (g)
16-7-3860	polymer	white	35.4	30.5	13	7.1kg	5

