

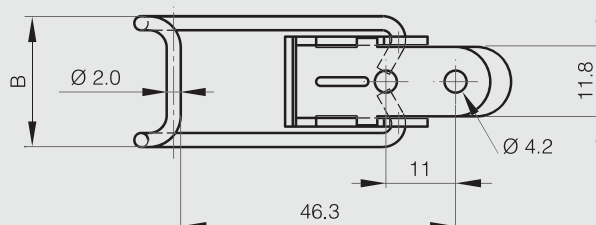
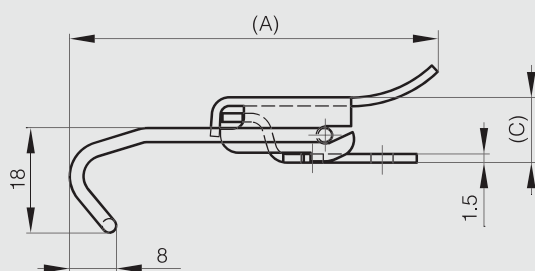


Toggle latches without strikes

Toggle latch without strike - 63.6 mm

STEEL RoHS

Part number	Material	Finish	A	B	C	Weight (g)
16-7-3767	steel	black cataphoresis	63	22	11.8	20



Toggle latches without strike - 64 mm

STAINLESS STEEL RoHS

Part number	Material	Finish	A	B	C	Weight (g)
16-7-3947	steel	zinc plated	64	28.7	14	45
16-7-3948	304 stainless steel	raw	64	28.7	14	45

