



## Toggles latches

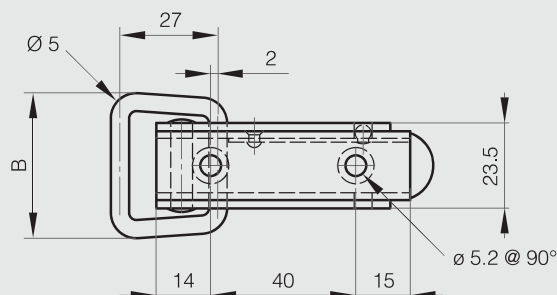
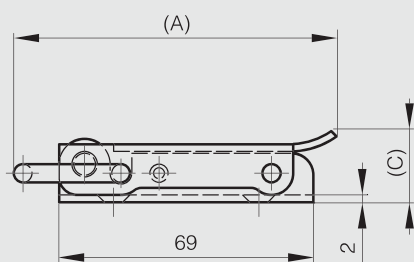
### Toggle latch without strike - 88.5 mm

Punched holes.

This latch is used with strike part number 16-7-3601.



Part number	Material	Finish	A	B	C	Weight (g)
16-7-3829	304 stainless steel	raw	88.5	40	20	106



### Strike for part number 16-7-3829



Part number	Material	Finish	A	B	Weight (g)
16-7-3601	304 stainless steel	raw	28	25	24

