

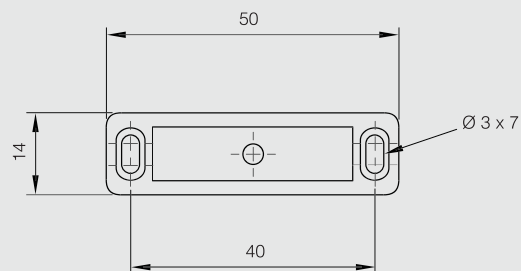
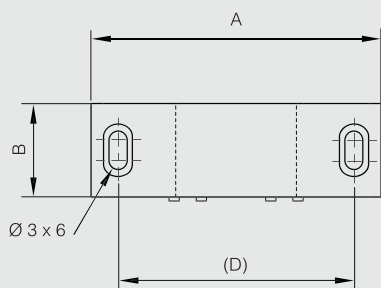
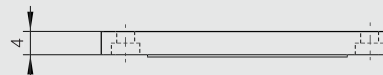
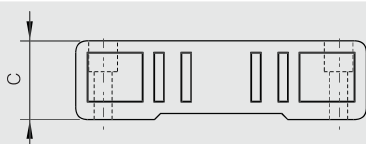


Screw-on magnetic catches

Screw-on magnetic catches with counterplate - force 4 kg



Part number	Material	Finish	A	B	C	D	Force	Weight (g)
16-7-4278	ABS	white	48	15.5	13	37.5	4kg	22



Screw-on magnetic catches with counterplate - force 4 kg - high temperature resistance



Part number	Material	Finish	A	B	C	Force	Note	Weight (g)
16-7-3494	zinc die-cast	nickel plated	49.4	16.4	15.6	4kg	temperature up to 80°C	56
16-7-3610	zinc die-cast	nickel plated	49.4	16.4	15.6	4kg	temperature up to 300°C	56

