



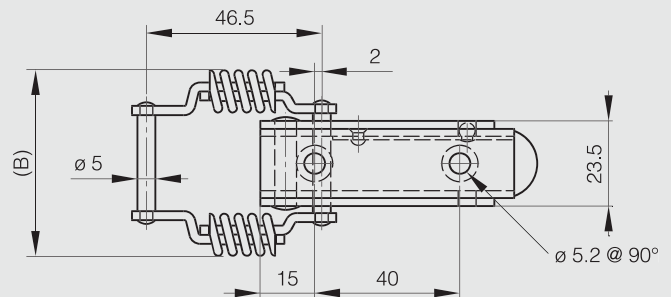
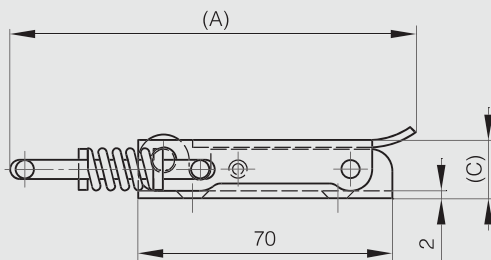
Spring loaded toggle latches

Spring loaded toggle latches without strike - 108 mm

This latch is used with strike part numbers 16-7-3406, 16-1-4038 and 16-7-3870.

STEEL

Part number	Material	Finish	A	B	C	Weight (g)
16-7-3400	steel	raw	108	49.5	19.5	118
16-7-3402	steel	zinc plated	108	49.5	19.5	118



Strikes for part numbers 16-7-3400 and 16-7-3402

STEEL

Part number	Material	Finish	A	B	S	Weight (g)
16-7-3406	steel	zinc plated	85	25	5	57

