



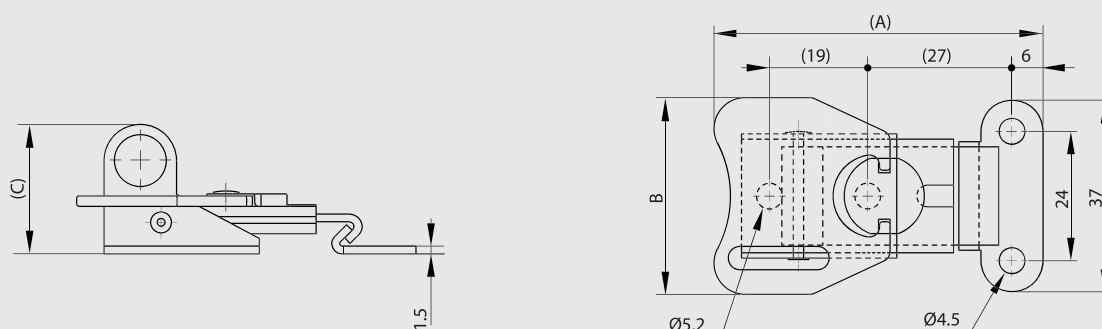
## Toggles latches

### Padlockable rotary toggle latches

Strike included.



Part number	Material	Finish	A	B	C	Note	Weight (g)
16-1-9017	304 stainless steel	raw	64	38	24	with strike	60



### Lockable toggle latch without strike

Keyed alike (2 identical keys).

Strike not included.

For part number 16-1-4257: with dust shutter.



Part number	Material	Finish	A	B	C	Weight (g)
16-1-4257	304 stainless steel	raw	106.5	40	17	132

