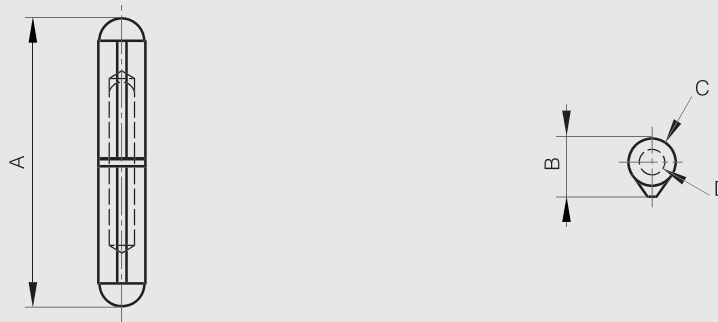


Round top weld-on steel hinges - brass washer

Fixed pin and washer.



Part number	Material	Finish	A	B	C	D	Pin material	Weight (g)
14-7-3585	steel	raw	40	10	8	5	steel	16
14-7-3573	steel	raw	60	12	10	6	steel	36
14-7-3574	steel	raw	80	16	13	8	steel	84
14-7-3575	steel	raw	100	20	16	10	steel	160
14-7-3586	steel	raw	120	20	16	11	steel	195
14-7-3587	steel	raw	135	22.5	18	12	steel	270
14-7-3576	steel	raw	150	25.5	20	13	steel	390
14-7-3794	steel	raw	180	25.5	20	13	steel	465
14-7-3588	steel	raw	200	29	23	16	steel	660
14-7-3589	steel	raw	40	10	8	5	brass	16
14-7-3590	steel	raw	60	12	10	6	brass	36
14-7-3591	steel	raw	80	16	13	8	brass	84
14-7-3592	steel	raw	100	20	16	10	brass	160
14-7-3593	steel	raw	120	20	16	11	brass	195
14-7-3594	steel	raw	135	22.5	18	12	brass	270
14-7-3595	steel	raw	150	25.5	20	13	brass	390
14-7-3596	steel	raw	200	29	23	16	brass	660



Round top weld-on steel hinges - steel pin - ball bearing

Fixed pin.



Part number	Material	Finish	A	B	C	D	Weight (g)
14-7-3610	steel	raw	141	22.5	18	12	272
14-7-3611	steel	raw	155.5	25.5	20	13	392
14-7-3612	steel	raw	206	29	23	16	662

