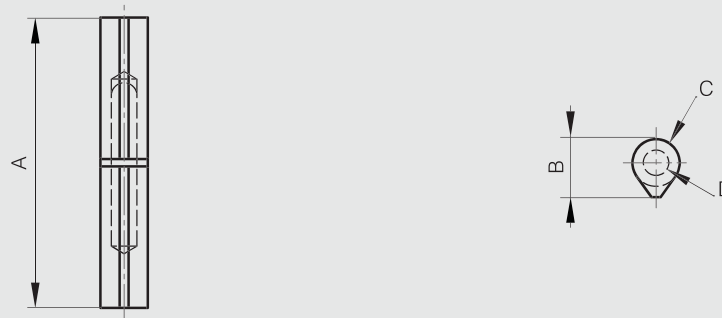


### Flat top weld-on steel hinges - brass washer

Fixed pin and washer.



Part number	Material	Finish	A	B	C	D	Pin material	Weight (g)
14-7-3583	steel	raw	45	10	8	5	steel	20
14-7-3569	steel	raw	60	12	10	6	steel	40
14-7-3570	steel	raw	80	16	13	7	steel	90
14-7-3571	steel	raw	100	20	16	9	steel	115
14-7-3603	steel	raw	120	20	16	9	steel	135
14-7-3572	steel	raw	140	25.5	20	11	steel	370
14-7-3584	steel	raw	200	29	23	16	steel	600
14-7-3597	steel	raw	45	10	8	5	brass	20
14-7-3598	steel	raw	60	12	10	6	brass	40
14-7-3599	steel	raw	80	16	13	7	brass	90
14-7-3600	steel	raw	100	20	16	9	brass	115
14-7-3604	steel	raw	120	20	16	9	brass	135
14-7-3601	steel	raw	140	25.5	20	11	brass	370



### Flat top weld-on stainless steel hinges - stainless steel pin - brass washer

Fixed pin and washer. Produced mainly in stainless steel, for a complete description of the materials contact us.



Part number	Material	Finish	A	B	C	D	Weight (g)
14-7-3693	304 stainless steel	raw	60	12	10	6	40
14-7-3696	304 stainless steel	raw	80	16	13	7	90
14-7-3697	304 stainless steel	raw	100	20	16	9	115
14-7-3698	304 stainless steel	raw	120	20	16	9	135

