

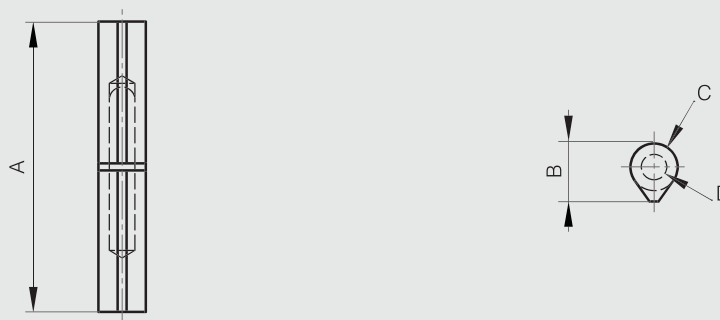


Flat top weld-on stainless steel hinges - stainless steel pin - brass washer

Fixed pin and washer. Produced mainly in stainless steel, for a complete description of the materials contact us.



Part number	Material	Finish	A	B	C	D	Weight (g)
14-7-3693	304 stainless steel	raw	60	12	10	6	40
14-7-3696	304 stainless steel	raw	80	16	13	7	90
14-7-3697	304 stainless steel	raw	100	20	16	9	115
14-7-3698	304 stainless steel	raw	120	20	16	9	135



Heavy duty pin hinges

With chamfered edges.

Produced mainly in stainless steel, for a complete description of the materials contact us.



Part number	Material	Finish	A	B	C	D	E	F	H	S	Weight (g)
12-7-3810	303 stainless steel	brushed	64	13	16	6	16	16	9.5	M5x6	90
12-7-3811	303 stainless steel	brushed	76	13	19	6	19	18	13	M6x7.5	130

